

MATERIAŁY I SPRAWOZDANIA



RZESZOWSKIEGO
OŚRODKA
ARCHEOLOGICZNEGO

XXXIX

Muzeum Okręgowe w Rzeszowie
Instytut Archeologii Uniwersytetu Rzeszowskiego
Fundacja Rzeszowskiego Ośrodka Archeologicznego

MATERIAŁY I SPRAWOZDANIA
Rzeszowskiego Ośrodka Archeologicznego

Tom XXXIX

Rzeszów
2018

Komitet Redakcyjny:
Sylwester Czopek, Václav Furmánek (Słowacja), Diana Gergova (Bułgaria),
Sławomir Kadrow, Michał Parczewski, Vira Gupalo (Ukraina)

Zespół stałych recenzentów:
Jan Chochorowski, Igor Chrapunov (Krym), Wojciech Chudziak, Eduard Droberjar (Czechy),
Lubomira Kaminská (Słowacja), Przemysław Makarowicz, Anna Zakościelna

Pozostali recenzenci tomu XXXIX:
Lech Czerniak, Marek Florek, Jerzy Libera, Jolanta Małecka-Kukawka,
Marek Nowak, Anita Szczepanek

Redaktor
Sylwester Czopek
(sycz@archeologia.rzeszow.pl)

Sekretarze Redakcji:
Joanna Ligoda, Joanna Podgórska-Czopek
(archeo@muzeum.rzeszow.pl)

Strona internetowa czasopisma:
http://www.archeologia.univ.rzeszow.pl/?page_id=337

Tłumaczenia
Barbara Jachym – język niemiecki
Beata Kizowska-Lepiejza – język angielski
oraz autorzy

Zdjęcie na okładce:
Bransoleta z grobu 42 odkrytego na cmentarzysku Opuški, Simferopol rai. (fot. B. Polit)

© Copyright by Muzeum Okręgowe w Rzeszowie
© Copyright by Instytut Archeologii UR
© Copyright by Fundacja Rzeszowskiego Ośrodka Archeologicznego
© Copyright by Oficyna Wydawnicza „Zimowit”



Muzeum Okręgowe
w Rzeszowie
35-030 Rzeszów
ul. 3 Maja 19
tel. 17 853 52 78



Instytut Archeologii
Uniwersytetu Rzeszowskiego
35-015 Rzeszów
ul. Moniuszki 10
tel. 17 872 15 90



Fundacja Rzeszowskiego
Ośrodka Archeologicznego
35-015 Rzeszów
ul. Moniuszki 10
tel. 17 872 15 81



Oficyna Wydawnicza
„Zimowit” sp. z o.o.
35-105 Rzeszów
ul. Boya Żeleńskiego 27
oficyna.zimowit@gmail.com

ISSN 0137-5725 ISBN 978-83-7996-667-7 DOI: 10.15584/misroa

WYDAWNICTWO UNIWERSYTETU RZESZOWSKIEGO
35-310 Rzeszów, ul. prof. S. Pignonia 6, tel.: 17 872 13 69, tel./faks: 17 872 14 26
e-mail: wydaw@ur.edu.pl; <http://wydawnictwo.ur.edu.pl>
wydanie I, format A4, ark. wyd. 27, ark. druk. 25

SPIS TREŚCI

STUDIA I MATERIAŁY

Sławomir Kadrow, Constantin Preoteasa, Anna Rauba-Bukowska, Senica Țurcanu , The technology of LBK ceramics in eastern Romania	5
Dariusz Król , Studia nad osadnictwem kultury pucharów lejkowatych na lessach Podgórze Rzeszowskiego i Doliny Dolnego Sanu	39
Tomasz Boroń , Materiał odpadowy z produkcji siekier czworościennych z obiektów 1 i 11 ze stanowiska Wilczyce 10, pow. sandomierski	57
Beata Polit , Considerations on bracelets with „globular” and „pineal-shaped” endings from the Sarmatian period Crimea	71
Andrzej Rozwałka , Zaginiony krajobraz. Rola dawnej kartografii w badaniach archeologicznych minionych przestrzeni kulturowych. Wybrane przykłady z codziennej praktyki	91

SPRAWOZDANIA I KOMUNIKATY

Adrianna Raczak , Zabytki wykonane technikami krzemieniarskimi ze wschodniej części polskich Karpat. Badania z lat 2016–2017	111
Dmytro Verteletskyi, Andrij Bardetskyi , Datowanie materiałów kultury trypolskiej ze stanowiska Myrogoszcza 15 odkrytych w 2017 roku	117
Andrzej Dziedzic, Katarzyna Trybała-Zawiślak , Brązowa siekierka z Medyki w świetle wyników analizy składu chemicznego EDS	129
Marek Florek, Aldona Kurzawska, Dominik Kacper Płaza , Nowe cmentarzysko w Rzeczycy Suchej, gm. Dwikozy, woj. świętokrzyskie	137
Paweł Kocańda, Ewelina Ocadryga-Tokarczyk, Tomasz Tokarczyk , Wyniki badań archeologicznych prowadzonych w 2017 roku na ulicy 3 Maja w Rzeszowie, stanowisko 17	149
Joanna Rogóż , Nowożytnie cmentarzysko z Placu Farnego oraz pochówki przy kościele Świętego Krzyża w Rzeszowie – wstępne informacje z badań antropologicznych	163

Z ŻAŁOBNEJ KARTY

Sylwester Czopek , Odeszli...	185
--	-----

AAR	„Analecta Archaeologica Ressoviensia”, Rzeszów
AHP	„Archaeologia Historica Polona”, Poznań
APolski	„Archeologia Polski”, Warszawa
APŚ	„Archeologia Polski Środkowo-Wschodniej”, Lublin
AR	„Archeologické rozhledy”, Praha
IA	„Informator Archeologiczny”, Warszawa
KHKM	„Kwartalnik Historii Kultury Materialnej”, Warszawa
Prz. Arch.	„Przegląd Archeologiczny”, Poznań, Wrocław–Poznań
Mat. Star.	„Materiały Starożytne”, Warszawa
MSROA	„Materiały i Sprawozdania Rzeszowskiego Ośrodka Archeologicznego”, Rzeszów
PMMAiE	„Prace i Materiały Muzeum Archeologicznego i Etnograficznego w Łodzi”, Łódź
RLubelski	„Rocznik Lubelski”, Lublin
Ros. Arch.	„Rossijskaja archeologija”, Moskva
Sov. Arch.	„Sovetskaâ arheologija”, Moskva
Spr. Arch.	„Sprawozdania Archeologiczne”, Kraków
WA	„Wiadomości Archeologiczne”, Warszawa
VAR	„Via Archaeologica Ressoviensia”, Rzeszów

Beata Polit*

Considerations on bracelets with “globular” and “pineal-shaped” endings from the Sarmatian period Crimea¹

This work discusses the issue of bracelets occurring in the Sarmatian period in the Crimea, known in archaeological literature as “bracelets with globular, conical, or pineal-shaped endings”. Basing on a group of 57 artefacts from Late Scythian and Sarmatian necropolises, as well as those dated to the Late Roman period, a typological classification of the items has been made. At the same time, on the basis of the chronological analysis of sets containing bracelets belonging to the discussed type, data allowing us to determine their chronological range have been obtained. The question of the provenance of such items, the issue of their occurrences in graves (taking into account the sexes of the buried persons), as well as the methods of wearing them, have been discussed.

KEY WORDS: bracelets, jewellery, Late Scythian, Sarmatians, Crimean peninsula

Submission: 03.10.2018; acceptance: 15.11.2018

Bracelets were highly popular among the Crimean population in the Sarmatian period (2nd half of the 2nd century BC – 4th century AD), which is particularly attested by their common occurrences in funerary materials (T.N. Vysotskaâ 1994, p. 108; I.I. Gušina, D.V. Žuravlev 2016a, p. 87). They represent a considerable and, what is important, interesting group of artefacts that allows us not only to reconstruct the fashion predominant in the discussed time, but also to learn about social customs, or even to reproduce intercultural contacts. Despite this significant cognitive value, bracelets, as well as other body ornaments (earrings, rings, diadems) have not been the subject of a comprehensive elaboration. The issue of the discussed artefact category has been raised to a greater or lesser degree in various publications of, in great measure, monographic or reporting character (e.g. È.A. Symonovič 1983, pp. 93–94; I.N. Hrapunov, S.A. Muł'd, A.A. Stoânova 2009, pp. 13–14; further literature there). Nevertheless, there is a certain number of publications that are *sensu stricto* devoted to the discussed ornament type (A.A. Trufanov 2001; B. Polit 2018b). All the same, the available pieces of information allow us to state that the bracelets are stylistically diversified and it is possible to distinguish several types within this group, as well as to divide them into subtypes.

Bracelets with more or less thickened endings can be considered a separate type of such ornaments from the Sarmatian period Crimea. Such items are known in archaeological literature as “bracelets with globular, conical,

or pineal-shaped endings” (O.D. Daševskaâ 1991, p. 39; V.M. Kosânenko 2008, p. 135; A.A. Trufanov 2009, p. 225; *et al.*). They correspond to type 2 according to the classification by T.N. Vysotskaâ (1994, p. 110), type 8 according to the classification by V.N. Korpusova (1983, p. 59), and type 1 according to the classification by V.M. Kosânenko (2008, p. 135). However, S.F. Strželeckij and her team, when working on materials from the Sovhoz 10 cemetery, included such artefacts into type 2 (S.F. Strželeckij, *et al.* 2005, p. 155).

Scholars have been grouping the discussed bracelets in one type, without selecting subtypes that would have categorised the artefacts on account of the different forms of the thickened endings of the hoops. Even preliminary observation of the bracelets with globular swelling shows the diversity of forms and the necessity to categorise them.

DIVISION OF BRACELETS WITH THICKENED ENDINGS

In order to classify such ornaments, 57 artefacts from 9 cemeteries (fig. 1; see catalogue) have been selected². All the known specimens are made of bronze, that is raw material of predominant role in jewellery production. The classification of this modest set of bracelets was based on the

¹ This work is a result of research project No. 2014/13/N/HS3/04575 financed by the National Science Centre.

² Materials from sites associated with the Late Scythian and the Sarmatian culture, as well as those dated to the Late Roman period have been selected for the analysis, according to a site list compiled by I.N. Hrapunov (see: I. Khrapunov 2012, fig. 44, 82, 100).

* Muzeum Narodowe w Kielcach, Plac Zamkowy 1, 25-001 Kielce; Instytut Archeologii UR, ul. Moniuszki 10, 35-015 Rzeszów; e-mail: b.polit@mnki.eu

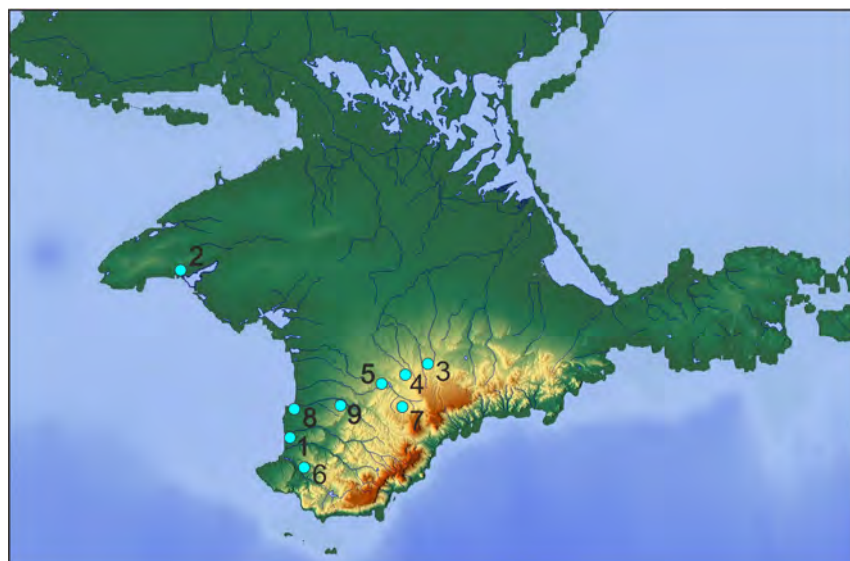


Fig. 1. Locations of the sites: 1 – Bel'bek IV, Sevastopol; 2 – Belâus, Chornomor-ske rai.; 3 – Neyzats, Simferopol rai.; 4 – Opuški, Simferopol rai.; 5 – Scythian Neapolis, Simferopol rai.; 6 – Sovhoz 10, Sevastopol; 7 – Tavel', Simferopol rai.; 8 – Ust'-Al'ma, Bakhchysarai rai.; 9 – Zavetnoe, Bakhchysarai rai. (illustration B. Polit)

Ryc. 1. Lokalizacja stanowisk: 1 – Bel'bek IV, Sewastopol; 2 – Belâus, Czornomorski rai.; 3 – Neyzats, Symferopolski rai.; 4 – Opuški, Symferopolski rai.; 5 – Neapol Scytyjski, Symferopolski rai.; 6 – Sovhoz 10, Sewastopol; 7 – Tavel', Symferopolski rai.; 8 – Ust'-Al'ma, Bakhczysarajski rai.; 9 – Zavetnoe, Bakhczysarajski rai. (rys. B. Polit)

form of the swelling, and then on the type of the wire used in the production of a given artefact. Such criteria made it possible to divide the analysed type 3 into subtypes, and to select variants of the latter.

Subtype 1 encompasses bracelets ending with more or less prominent globular swellings (fig. 2). Artefacts included into this group are made of smooth or, less frequently, twisted wire, and their hoops have circular, oval, or polygonal cross-sections. Usually, bracelets belonging to this subtype are of open circumference, although items whose endings meet or overlap are also sporadically found. Because of the types of wires used in the production of the bracelets, 2 variants of subtype 1 can be selected.

Variant a includes bracelets made of smooth wire of circular or, much less frequently, oval cross-sections (fig. 2:1–6). The items belonging to the variant are the most popular forms of subtype 1. They are mainly represented by delicate items made of wire, with hoops of circular cross-sections and endings that do not meet. Most of such artefacts come from the Scythian Neapolis (Simferopol rai.), e.g. graves 75, 96 (burial 4), as well as from the Ust'-Al'ma necropolis (Bakhchysarai rai.) (e.g. grave 96, layer 1, burial 3). However, single specimens occurred in materials dated to the Late Roman period (È.A. Symonovič 1983, fig. XXXIII:8, 11; T.N. Vysotskaâ 1994, fig. 33:15). Such an artefact was found in the Neyzats cemetery (Simferopol rai.), grave 537 (I.N. Hrapunov 2014, fig. 81:18). Bracelets with endings that overlap or meet represent a low percentage and, to a great extent, they are specimens discovered in the Scythian Neapolis (e.g. grave 79) and in the Ust'-Al'ma cemetery (e.g. grave 133), which are sites associated with the Late Scythian culture (È.A. Symonovič 1983, fig. XXXIII:3; T.N. Vysotskaâ 1994, fig. 45:15).

Variant b represents specimens made of twisted wire of polygonal cross-section. This kind encompasses three bracelets ending with particularly prominent globular endings that do not meet. They come from the Bel'bek IV necropolis (fig. 2:7–9). Two of them, found in graves 75 and 163, are massive forms, different from wire artefacts from the analysed collection of ornaments (I.I. Gušina, D.V. Žuravlev 2016b, fig. 46:4; 102:9). Nevertheless, the forms of their endings indisputably indicate that they belong to the group of bracelets ending with swellings.

The third artefact is a small item with a broken off globular ending. It was discovered in a child grave, no. 42 (*ibidem*, fig. 25:17).

Subtype 2 is represented by bracelets ending with more or less prominent oval swellings (fig. 3:1–6). The hoops of the items are made of smooth wire of circular or, less frequently, oval cross-section. Items belonging to the subtype are of open circumference. Sporadically, items with endings that meet or overlap are found.

Previously, artefacts encompassed by the discussed subtype were described as bracelets with globular or pineal-shaped endings (cf. V.G. Petrienko 1978, p. 49; A.A. Stoânova 2012, p. 71). Artefacts included into this subtype are a small group of items, where bracelets with endings that do not meet and with hoops of circular cross-section are the most numerous. Such ornaments were found, among others, in the Scythian Neapolis (grave 96, burial 4) and in the Opuški cemetery (Simferopol rai.) (grave 3) (È.A. Symonovič 1983, fig. XXXIII:5). It is worth noting that the greatest number of such bracelets have been indeed found in the Opuški necropolis, including one specimen with endings that overlap and with a hoop of oval cross-section (grave 33) (A.A. Stoânova 2012, fig. 26:1).

Subtype 3 comprises items ending with more or less prominent swellings similar to cones (fig. 4:1–9). Bracelets belonging to the discussed group are made of smooth wire of circular or, less frequently, oval cross-section. Most often, they are of open circumference, although specimens with endings that slightly meet or overlap are also sporadically found.

Items described by archaeologist as bracelets with pineal-shaped or, more seldom, pyramidal endings were included into the discussed type (A.A. Trufanov 2009, p. 225; V.A. Larenok 2013, p. 274). Because of the fact that the forms of the endings are similar, a standardised designation “conical endings” started being used. The subtype under discussion groups the greatest number of bracelets, among which the highest percentage are ornaments with endings that overlap (fig. 5) or meet. Such artefacts come, for example, from the following cemeteries: Bel'bek IV (grave 135), Ust'-Al'ma (grave 98) (I.I. Gušina, D.V. Žuravlev 2016b, fig. 85:14). The group encompasses mainly delicate bracelets, but large specimens, characterised

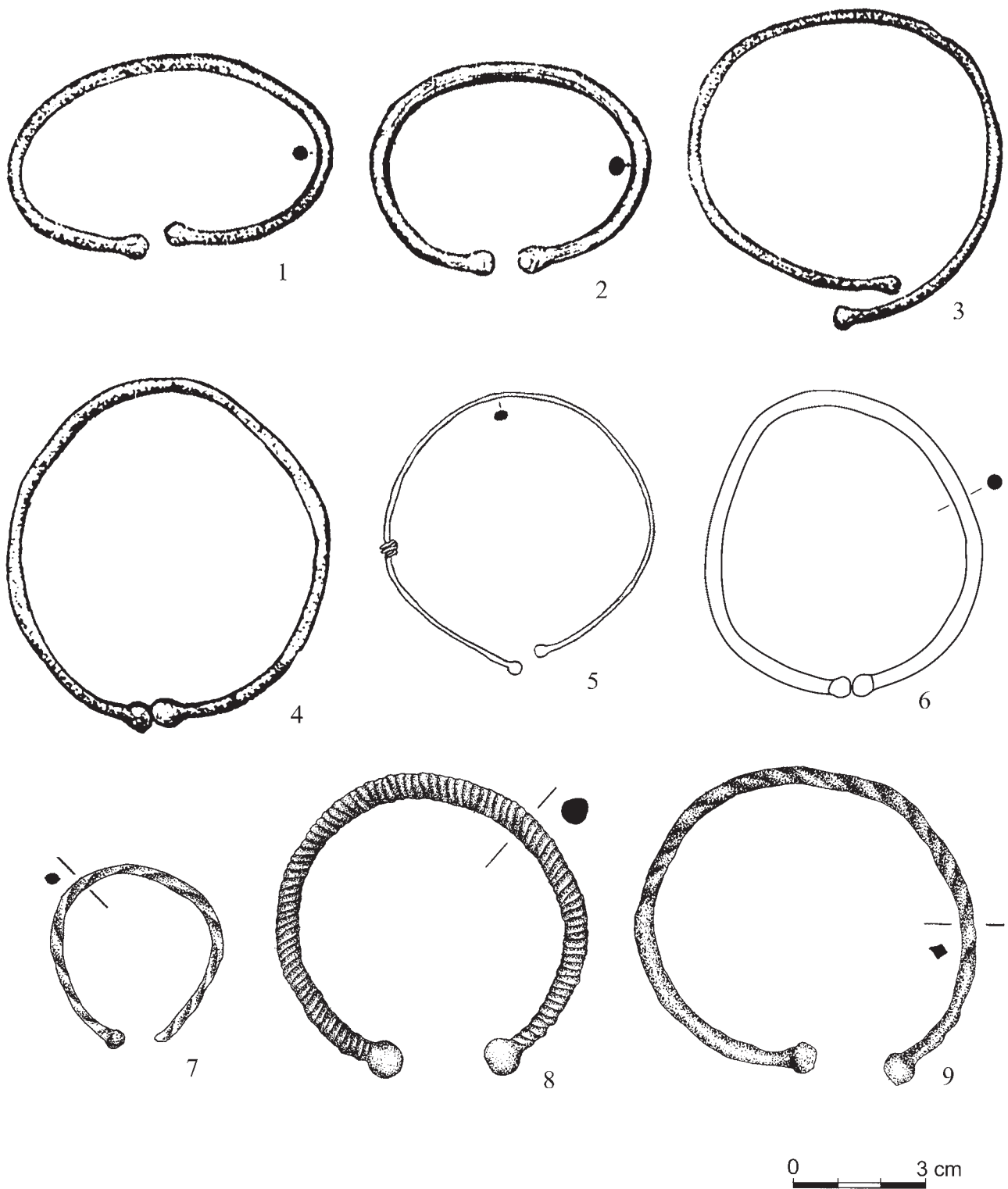


Fig. 2. Subtype 1 bracelets: 1 – Scythian Neapolis, grave 36; 2 – Scythian Neapolis, grave 96; 3–4 – Scythian Neapolis, grave 79; 5 – Neyzats, grave 537; 6 – Ust'-Al'ma, grave 138; 7 – Bel'bek IV, grave 42; 8 – Bel'bek IV, grave 75; 9 – Bel'bek IV, grave 163 (after 1–4 – È.A. Symonovič 1983; 5 – I.N. Hrapunov 2004a; 6 – T.N. Vysotskaâ 1994; 7–9 – I.I. Gušina, D.V. Žuravlev 2016b)

Ryc. 2. Bransolety podtypu 1: 1 – Neapol Scytyjski, grób 36; 2 – Neapol Scytyjski, grób 96; 3–4 – Neapol Scytyjski, grób 79; 5 – Neyzats, grób 537; 6 – Ust'-Al'ma, grób 138; 7 – Bel'bek IV, grób 42; 8 – Bel'bek IV, grób 75; 9 – Bel'bek IV, grób 163 (wg 1–4 – È.A. Symonovič 1983; 5 – I.N. Hrapunov 2004a; 6 – T.N. Vysotskaâ 1994; 7–9 – I.I. Gušina, D.V. Žuravlev 2016b)

by their considerable size, like, e.g., the artefact from the Bel'bek IV cemetery, grave 175 or Ust'-Al'ma, grave 138 (fig. 6) are

also sporadically recorded (T.N. Vysotskaâ 1994, fig. 33:20; I.I. Gušina, D.V. Žuravlev 2016b, fig. 112:5).

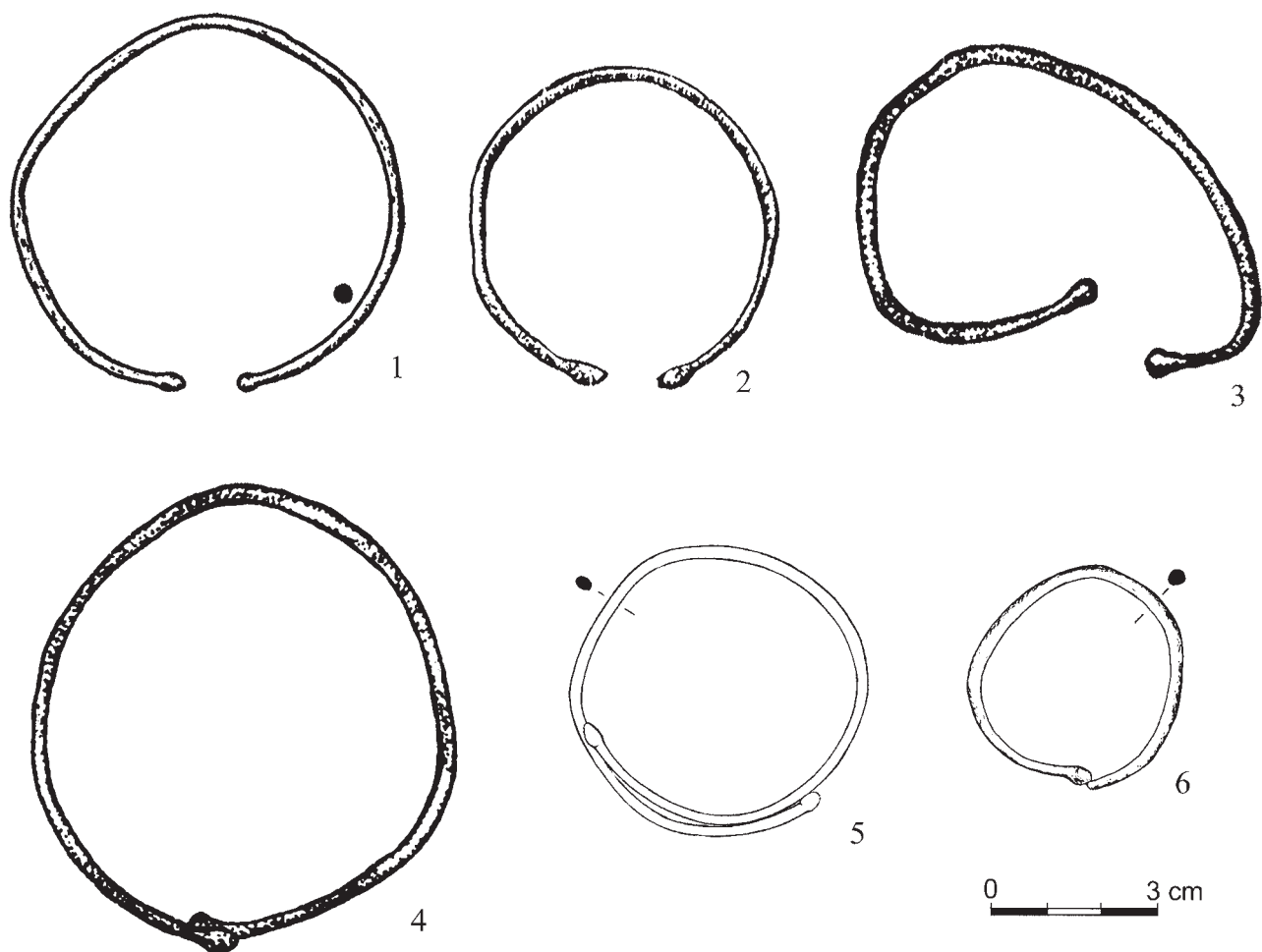


Fig. 3. Subtype 2 bracelets: 1 – Beláus, grave 10; 2 – Scythian Neapolis, grave 96; 3–4 – Scythian Neapolis, grave 79; 5 – Opuški, grave 33; 6 – Opuški, grave 12 (after 1 – O.D. Daševskaâ 2014; 2–4 – Ě.A. Symonoviĉ 1983; 5–6 – A.A. Stoânova 2012)

Ryc. 3. Bransolety podtypu 2: 1 – Beláus, grób 10; 2 – Neapol Scytyjski, grób 96; 3–4 – Neapol Scytyjski, grób 79; 5 – Opuški, grób 33; 6 – Opuški, grób 12 (wg 1 – O.D. Daševskaâ 2014; 2–4 – Ě.A. Symonoviĉ 1983; 5–6 – A.A. Stoânova 2012)

CHRONOLOGY OF THE BRACELETS

Bracelets ending with oval, globular, or conical swellings appeared in the Crimean Peninsula already in the 5th century BC (V.G. Petrienko 1978, p. 52; V.A. Kolotuhin 1996, pp. 47–48; I.N. Hrapunov, S.A. Muľd, A.A. Stoanova 2009, p. 13). In the analysed group of materials, the earliest forms of this type are dated to the end of the 1st century BC –beginning of the 1st century AD. In that period, they were present mainly in collective graves, characteristic for the funerary rites of the Late Scythian culture, linked with structures on the plan of the letter “T” (B. Polit 2012, p. 183). A specimen found, with Ambroz³ 15/1 type fibula (Kropotov⁴ 4/I) near a person (burial 2) interred in layer 2, grave 3, in the Opuški cemetery can be dated to this period. Of similar date can be also artefacts discovered in funerary structures, dated to the 1st century BC – beginning of the 2nd century AD, from the Scythian Neapolis (grave 74) and the Opuški cemetery (grave 42) (Ě.A. Symonoviĉ 1983, pp. 50–53;

I.N. Hrapunov, S.A. Muľd, A.A. Stoanova 2009, pp. 32–33). Unfortunately, in these cases, there are no dating contexts for the ornaments, thus narrowing their chronologies within the long period of the functioning of the construction is impossible.

The greatest number of the bracelets in question occur in graves dated to the 1st–2nd centuries AD (S.F. Strželeckij, *et al.* 2005, p. 154; I.N. Hrapunov, S.A. Muľd, A.A. Stoanova 2009, p. 13). However, the great majority of the sets, including also those from the Bel’bek IV (fig. 7) (grave 213 with 2 fibulae of A13 (K8/I/1), A13/2 (K8/I/2) types and *terra sigillata* vessels: bowls PSA⁵ Źuravlev⁶ 18, cup PSA Ź32/1, pitcher PSB⁷ Ź2/1), or the Ust’-A’lma cemetery (grave 138 with fibulae Riha⁸ 7/2 (K16/1), R7,4 (K16/3), R7,5 (K 16/7)), prove that the time can be narrowed to the period between the end of the 1st century – beginning of the 2nd century AD (E. Riha 1979, pp. 180, 182; D.V. Źuravlev 2010, pp. 56, 62, 74; V.V. Kropotov 2010,

⁵ PSA = *Pontic sigillatum* A.

⁶ Hereinafter, “type Źuravlev” will be represented by the abbreviated form “type Ź”.

⁷ PSB = *Pontic sigillatum* B.

⁸ Hereinafter, “type Riha” will be represented by the abbreviated form “type R”.

³ Hereinafter, “type Ambroz” will be represented by the abbreviated form “type A”.

⁴ Hereinafter, “type Kropotov” will be represented by the abbreviated form “type K”.

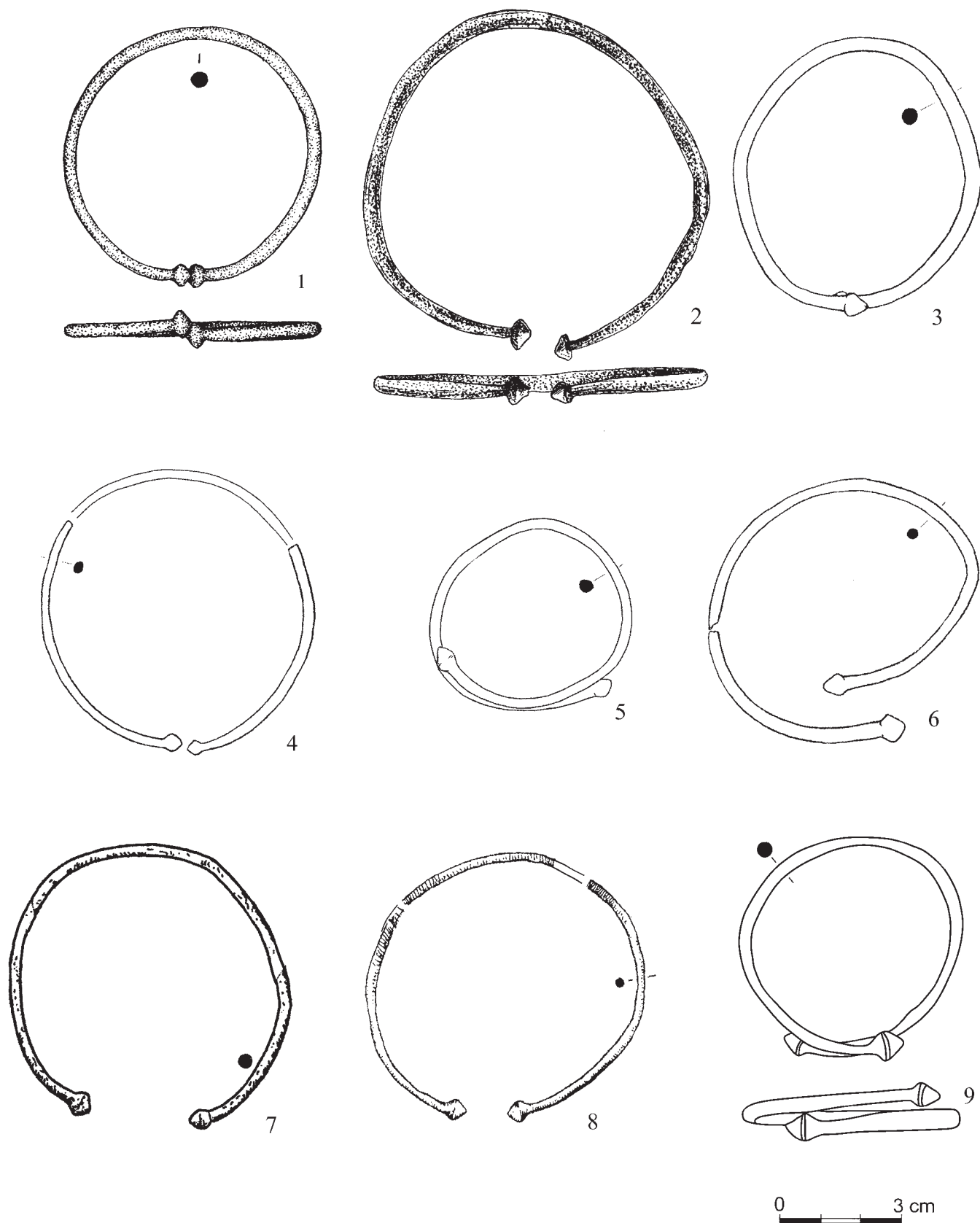


Fig. 4. Subtype 3 bracelets: 1 – Bel’bek IV, grave 135; 2 – Bel’bek IV, grave 175; 3–6 – Opuški, grave 42; 7 – Beláus, grave 10; 8 – Tavel’skie kurgany; 9 – Sovhoz 10, grave 112 (after 1–2 – I.I. Gušina, D.V. Žuravlev 2016b; 3–6 – I.N. Hrapunov, S.A. Muľd, A.A. Stoánova 2009; 7 – O.D. Daševská 2014; 8 – A.A. Trufanov 2004; 9 – S.F. Strželeckij et al. 2005)

Ryc. 4. Bransolety podtypu 3: 1 – Bel’bek IV, grób 135; 2 – Bel’bek IV, grób 175; 3–6 – Opuški, grób 42; 7 – Beláus, grób 10; 8 – Tavel’skie kurgany; 9 – Sovhoz 10, grób 112 (wg 1–2 – I.I. Gušina, D.V. Žuravlev 2016b; 3–6 – I.N. Hrapunov, S.A. Muľd, A.A. Stoánova 2009; 7 – O.D. Daševská 2014; 8 – A.A. Trufanov 2004; 9 – S.F. Strželeckij et al. 2005)



Fig. 5. Bracelet from grave 42 discovered in the Opuški cemetery (photo: B. Polit)

Ryc. 5. Bransoleta z grobu 42 odkrytego na cmentarzysku Opuški (fot. B. Polit)

pp. 197, 316, 318; I.I. Gušina, D.V. Žuravlev 2016a, pp. 37, 40, 46, 166). In the discussed time, the analysed bracelet type was also popular in other territories of the northern Black Sea coast (S.F. Strželeckij, *et. al* 2005, p. 154). It is worth noting that a similar situation can be also observed at the mouth of the Don River, on its right bank, where the necropolis of Kobàkova gorodiša (Rostov obl., Russia) is situated. Among the materials found in the cemetery, only bracelets ending with conical swellings are recorded (V.M. Kosànenko 2008, fig. 5:1; 55:2, 4–6; V.A. Larenok 2013, fig. 13:9, 10; 15:6; 21:7).

At the end of the 2nd – beginning of the 3rd century AD, the number of bracelets classified as belonging to the discussed group radically decreases. We know only 5 exemplars associated with this period. They come from the following cemeteries: Neyzats (graves 76; 254, burial 2; 507; 537), Sovhoz 10 (grave 112), and Ust'-Al'ma (grave 14). After this time, bracelets ending with swellings disappear not only from the analysed materials, but also from the whole region of the northern Black Sea coast (S.F. Strželeckij, *et al.* 2005, p. 154).

The chronological analysis of sets including bracelets of the discussed type yielded data allowing to state that such artefacts occurred between as early as the end of the 1st century BC/ beginning of the 1st century AD and the beginning of the 3rd



Fig. 6. Ust'-Al'ma, grave 138: subtype 3 bracelet and K16/5 type fibula-brooch. Archival photograph (after T.N. Vysotskaà 1975)

Ryc. 6. Ust'-Al'ma, grób 138: bransoleta podtypu 3 i fibula-broszka typu K16/5. Fotografia archiwalna (wg T.N. Vysotskaà 1975)

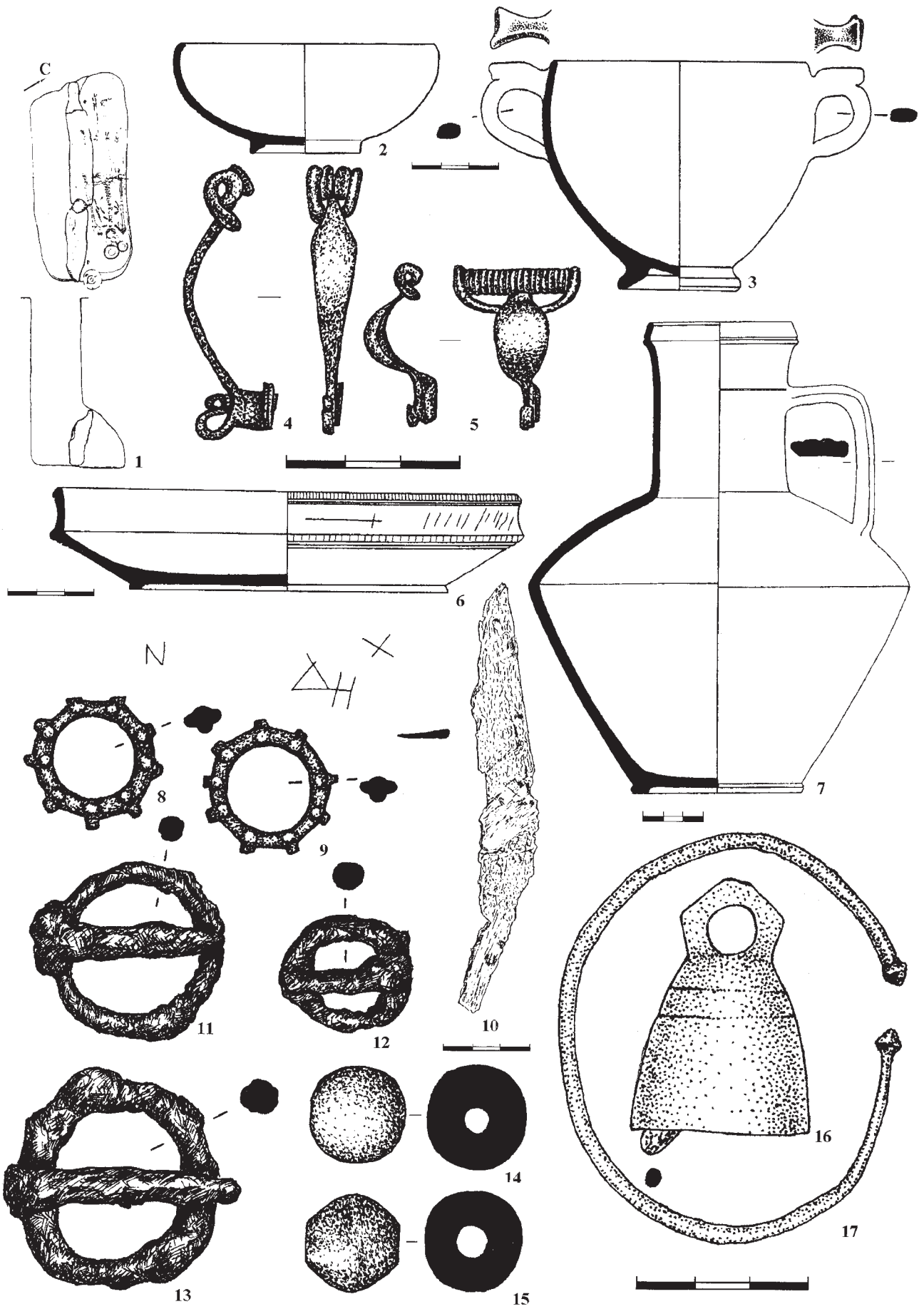


Fig. 7. Inventory of grave 123 from the Bel'bek IV cemetery (after I.I. Gušina, D.V. Žuravlev 2016b)
 Ryc. 7. Wyposażenie grobu 123 z cmentarzyska Bel'bek IV (wg I.I. Gušina, D.V. Žuravlev 2016b)

century AD. Such a time period estimation inconsiderably differs from previous assumptions, according to which bracelets ending with swellings appeared in the Crimea in the 1st half of the 1st century BC and occurred until the 2nd half of the 2nd century AD (T.N. Vysotskaâ 1994, p. 110).

In the discussed group of bracelets, it is impossible to discern distinct chronological-typological variables. All

the selected subtypes occurred during the entire period of the occurrence of the discussed group of bracelets. Nevertheless, it can be observed that between the end of the 1st century BC and the 2nd century AD, subtypes 1 and 2 were predominant, whereas between the end of the 2nd and the beginning of the 3rd centuries AD they gave way to subtype 3.

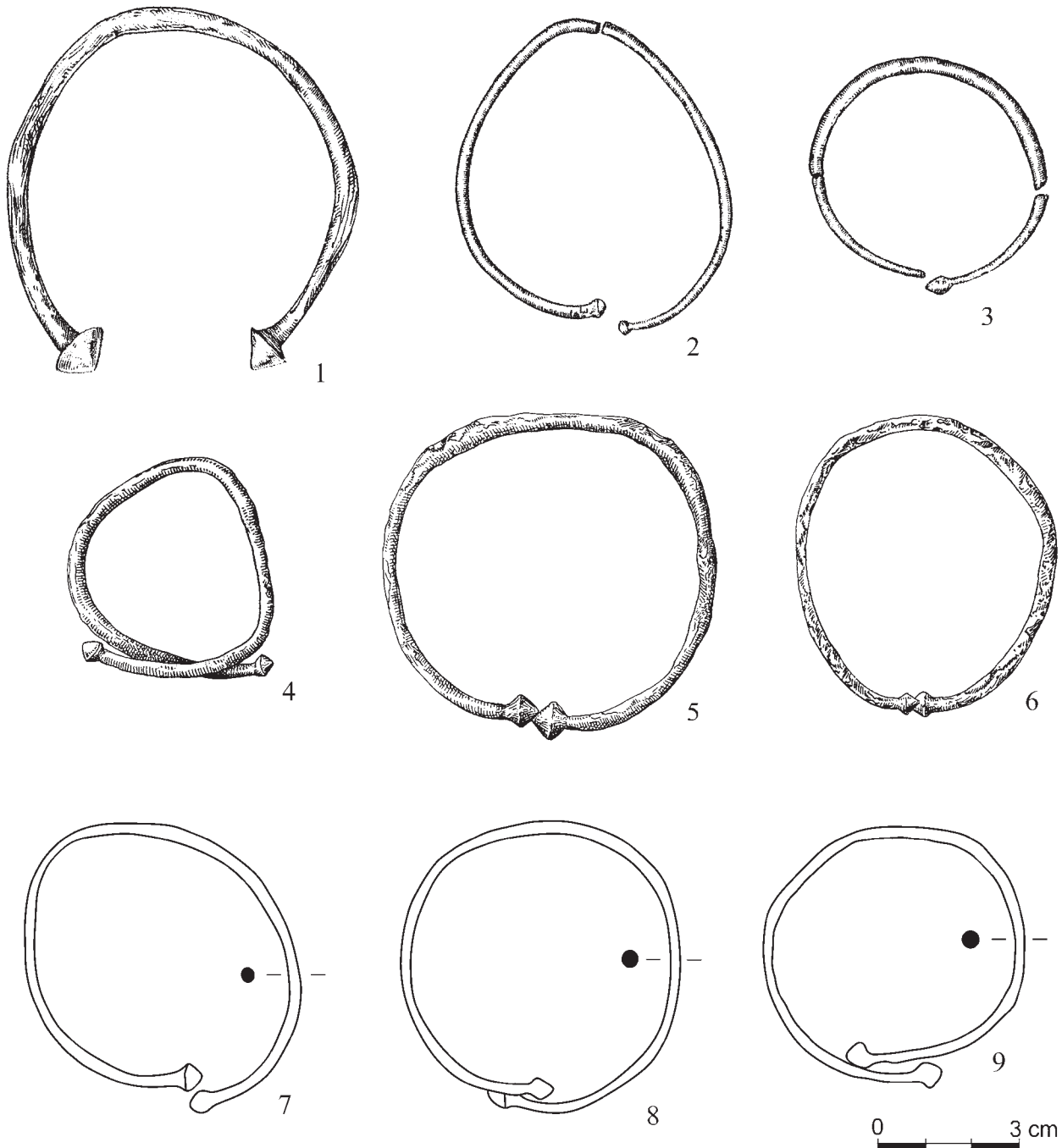


Fig. 8. Bracelets from early Scythian and antique sites that have their equivalents in materials from Crimean late Scythian and Sarmatian sites: 1 – Russkaâ Trostânka, burial mound 3 (Voronezh oblast/RU); 2 – Gulâj-Gorod, burial mound 313 (Cherkaśka oblast’/UA); 3 – Lûbotinskoe gorodiše (Kharkovskaya oblast/UA); 4–6 – Kobâkova gorodiše (Rostov oblast/RU); 7–9 – Novo-Otradnoe (Leninsky rai./Crimean peninsula) (after 1–3 – V.G. Petrenko 1978; 4–6 – V.A. Larenok 2013; 7–9 – T.M. Arsenëva 1970)

Ryc. 8. Bransolety pochodzące z wczesnocytyjskich oraz antycznych stanowisk mające swoje odpowiedniki w materiałach późnocytyjskich i sarmackich na Krymie: 1 – Russkaâ Trostânka, kurhan 3 (obw. woroneski/RU); 2 – Gulâj-Gorod, kurhan 313 (obw. czerkaski/UA); 3 – Lûbotinskoe gorodiše (obw. charkowski/UA); 4–6 – Kobâkova gorodiše (obw. rostowski/RU); 7–9 – Novo-Otradnoe (rai. leniński/Półwysep Krymski) (wg 1–3 – V.G. Petrenko 1978; 4–6 – V.A. Larenok 2013; 7–9 – T.M. Arsenëva 1970)

PROVENANCE

Determining the provenance of bracelets ending with more or less prominent swellings is not an easy task. As it has been mentioned, such bracelets appeared in the Crimea in the 5th century BC (V.A. Kolotuhin 1996, pp. 47–48; I.N. Hrapunov, S.A. Muřd, A.A. Stoánova 2009, p. 13). In that period, as well as in the following centuries, they occurred in materials associated with the Scythian (fig. 8:1–3) and the Kyzyl-Koba cultures (V.A. Kolotuhin 1996, pp. 47–48; N.G. Novičenkova 2015, p. 63). Such an early appearance of the discussed type of bracelets in the Crimean Peninsula is linked by V.G. Petrenko with the influences of Thracian tribes from southern Thracia (1978, p. 52). The scholar bases her conclusion on a thesis advanced by M. Párducz, who remarked that in the territories of Hungary and Romania, artefacts of this type appear in materials dated to the 6th century AD and co-occur with temple rings that end with analogous swellings (*ibidem*). This fact made it possible for the scholar to suggest that such jewellery was locally produced, without the contribution of Scythian influences (T. Kemecezi 2009, p. 84). Unfortunately, the route of the distribution of such bracelets to the Crimea has not been sufficiently explained by V.G. Petrenko, thus it appears to be unspecified. Nevertheless, it is worth pointing out that the earliest items from the Crimean Peninsula are morphologically different from those found in Hungary and Romania. Above all, they are less massive and they end with less coarse conical swellings, that with time became more slender. It is worth noting that, among bracelets ending with swellings, only the specimens ending with a cone (subtype 3) occurred in the Kobákova gorodiše and Novo-Otradnoe (Lenine rai.) cemeteries⁹ (fig. 8:4–9), whereas in the Zolotoe (Lenine rai.) cemetery, they represented a significant majority (T.N. Arseněva 1970, fig. 9:16; 11:15; V.N. Korpusova

1983, fig. XVII:8, XXII:21–22; V.M. Kosánenko 2008, fig. 5:1; 55:2, 4–6; V.A. Larenok 2013, fig. 13:9, 10; 15:6; 21:7; *et al.*). However, specimens with globular and oval swellings occurred in small numbers in Early Scythian materials (V.G. Petrenko 1978, fig. 38:6, 19). It is also worth pointing out that specimens analogous to subtype 2 bracelets are found in Poland, in the Oksywie culture materials (fig. 9:1–2) (W. Łęga 1938, fig. 10:1; M. Pietrzak 1997, fig. 118:2). They are considered to be the result of local processing of Celtic models that influenced the culture directly or through the intermediary of the Jastorf culture (T. Dąbrowska 2005, p. 86). Influences from the north are also taken into consideration, although this is not very possible.

It appears that bracelets with conical endings, that come from Late Scythian or Sarmatian materials in the Crimea, most probably came into being on the basis of archaic models. Their forms might have evolved with time, adjusting to the tastes of the buyers. The discussed bracelets are not sophisticated, thus modifying the shapes of the endings was possibly not a difficult task for jewellers. In the analysed materials, various conical, globular, and oval forms appear. They indicate that ancient artisans experimented with forms. Such a diversity of several shapes and the abundance of the bracelets make us suspect that they were produced locally, but on the basis of earlier forms that had arrived in the Crimea.

OCCURRENCES OF BRACELETS TAKING INTO CONSIDERATION THE SEXES AND THE METHODS OF WEARING THE ORNAMENTS

The question of the occurrences of the discussed artefacts in graves, having regard to the sex differences, is also important. Bracelets are a specific group of items. According to some

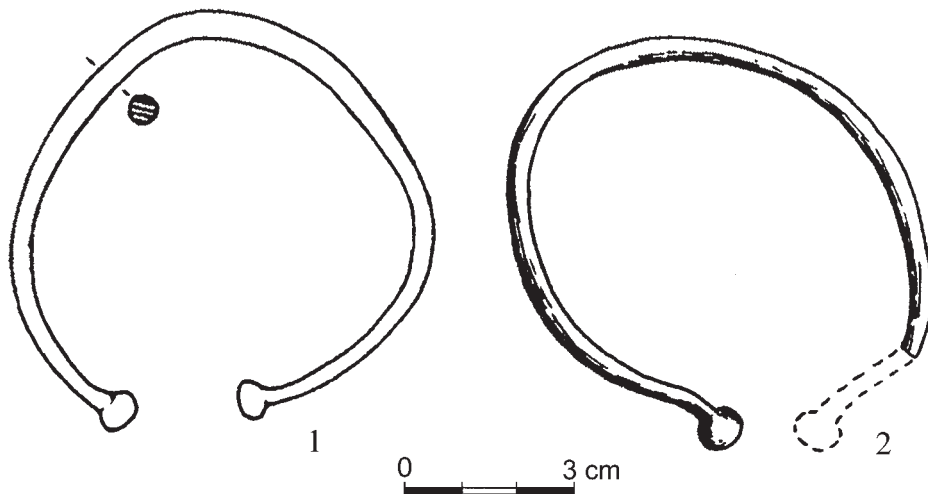


Fig 9. Bracelets from Poland, analogous to subtype 2a: 1 – Pruszcz Gdański, Pomeranian Voivodeship, grave 365; 2 – Chełmno, Kuyavian-Pomeranian Voivodeship, grave 151 (*according to T. Dąbrowska 2005*)

Ryc. 9. Analogiczne do podtypu 2a bransolety z obszaru Polski: 1 – Pruszcz Gdański, woj. pomorskie, grób 365; 2 – Chełmno, woj. kujawsko-pomorskie, grób 151 (*wg T. Dąbrowska 2005*)

⁹ In the Novo-Otradnoe cemetery, 34 bracelets, analogous to subtype 3 have been recorded. However, 32 of them were found in sets dated to the 1st century AD (T.N. Arseněva 1970, p. 138).

scholars, they represent indispensable elements of female garments, and indicate the social statuses of buried persons (e.g. L.S. Kločko 1981, pp. 64–65; J. Andrzejowski 1994, p. 317;

K. Skóra 2015, p. 174, further literature there). Nevertheless, archaeological materials show that the artefacts of this type cannot unequivocally determine the sexes of interred people, because they occur also in male and child graves. However, in the case of these groups, such ornaments appear sporadically and they significantly differ morphologically from the specimens occurring in female graves (B. Polit 2018a, p. 124). Unfortunately, a considerable part, that is over 45%, of the accessible materials are not useful in conducting such observations, since it comes from collective graves (e.g. Scythian Neapolis, grave 36; Opuški, grave 42), where it is impossible to associate the artefacts with particular buried persons (Ě.A. Symonovič 1963, pp. 144, 148; 1983, pp. 41–42; I.N. Hrapunov, S.A. Mułd, A.A. Stoānova 2009). The group encompasses also graves containing remains of undetermined sexes and inventories impossible to be unequivocally associated with one of the two gender groups. In the case of the sources that made it possible to determine the sexes of the buried persons, most of the discussed bracelets were present in graves containing bone remains and inventories indicating that they were female burials. In sum, in such constructions, 14¹⁰ artefacts from 10 graves were recorded. Bracelets found in female graves represent all the selected subtypes. The predominant number of the artefacts are small items made of smooth wire. Massive bracelets were registered only in two cases (Bel'bek IV, graves 75, 175), one of which (Bel'bek IV, grave 75) was made of a strongly twisted wire (I.I. Gušina, D.V. Źuravlev 2016b, fig. 46:4; 112:5).

Bracelets with endings marked with more or less prominent swelling were worn also by children. The great majority of them are made of small, smooth wire of circular cross-section (Opuški, grave 33) and twisted wire (Bel'bek IV, grave 42) (A.A. Stoānova 2012, fig. 26:1; I.I. Gušina, D.V. Źuravlev 2016a, fig. 25:42). This group of bracelets contains specimens whose morphology indicates that they were originally worn by adult persons (fig. 10). Possibly, the items lost their aesthetic value after being damaged (broken off or bent), and thus they were given to children after being adjusted to be worn on their hands. Such items most often have one of the endings broken off (Bel'bek IV, grave 42; Opuški, graves 12, 25) or endings strongly overlapping, which deforms the hoop (Opuški, grave 51; Sovhoz 10, grave 112) (S.F. Strželeckij, *et al.* 2005, fig. 15:69; A.A. Stoānova 2012, fig. 6:10, 15:3, 37:2). Such secondary utilisation of items was not limited to the Crimean Peninsula and it concerns different types of bracelets (cf. K. Skóra 2014, pp. 215–216; B. Polit 2018b, pp. 446–447).

The discussed type of items was not highly popular among men, which is clearly indicated by funerary materials. Such forms occurred only in 4 graves (Bel'bek IV, graves 6, 163; Ust'-Al'ma, grave 125, layer 6, burial 20; 977, layer 3, burial 8), that were identified by scholars, on the basis of the bone materials and the inventories, as male burials (T.N. Vysotskaā 1975, pp. 17–24; I.I. Gušina, D.V. Źuravlev 2016a, pp. 120,

¹⁰ The number of the bracelets does not include a single artefact from collective grave 42 from the Opuški cemetery. The item was found near the leg of a buried woman (burial 12) discovered in a *dromos*, in layer 5. The small dimensions of the hoop (40×43 mm) indicate that the ornament could have been worn by a child whose remains underwent oxidation, and, thus they were not recorded during the exploration (I.N. Hrapunov, S.A. Mułd, A.A. Stoānova 2009, fig. 29:7).



Fig. 10. Bracelet from a child grave, no. 12, discovered in the Opuški cemetery, Simferopol rai. (photo: B. Polit)

Ryc. 10. Bransoleta z grobu dziecięcego nr 12 odkrytego na cmentarzystku Opuški, Simferopol rai. (fot. B. Polit)

153, 154; A.E. Puzdrowskij, A.A. Trufanov 2016, p. 21)¹¹. Male graves yield only bracelets ending with particularly prominent globular swellings whose presence allows us to include them into subtype 3. It is worth noting that they are massive forms, different from bracelets worn by women. It is proved mainly by a specimen from grave 163, Bel'bek IV cemetery (I.I. Gušina, D.V. Źuravlev 2016a, fig. 102:9).

Concerning the ways of wearing the discussed bracelets among particular biological groups, in all cases they adorned hands, which is indicated by the locations of the found items. The sizes of the hoops allow us to suspect that they were worn near the wrist. Women wore one bracelet ending with swellings on the right hand. In one case (Scythian Neapolis, grave 74/NE) such an ornament was located on the left hand of a buried woman (A.E. Puzdrowskij 1992, pp. 188–190). It is worth noting that in female graves, analysed bracelets occurred in pairs. Each item in a pair represented a different form and adorned one hand of a buried woman. Such a situation was recorded in the Belāus cemetery (grave 10, burial 4), in the Scythian Neapolis (grave 96, burial 4), and in the Opuški cemetery (grave 42, layer 3, burial 6) (Ě.A. Symonovič 1983, pp. 55–56; I.N. Hrapunov, S.A. Mułd, A.A. Stoānova 2009, p. 8; O.D. Daševskaā 2014, pp. 21–22).

In the case of child burials, the reconstruction of the methods of wearing such bracelets is not easy, because the preservation state of the majority of the bone remains makes it impossible to ascertain on which hand a given artefact was worn (e.g. Bel'bek IV, grave 42; Opuški, graves 25, 51). Nevertheless, in three graves (Sovhoz 10, grave 66, 112; Ust'-Al'ma, grave 952, burial 2), the right-hand, and only in one case (Scythian Neapolis, grave 96/NE) the left-hand location of bracelets was recorded (S.F. Strželeckij 1962, pp. 25–26, 62–63; A.E. Puzdrowskij 1992, pp. 184–185).

As it has been mentioned above, male burials represent a small percentage of the whole, therefore it is difficult to indicate

¹¹ It is not inconceivable that the group of artefacts occurring in graves of people whose sex was not identified encompasses bracelets used by men. Nevertheless, their potential presence would not influence considerably the disproportion in the quantitative distribution of the discussed forms in particular graves with regard to sex differences.

the preference for wearing the discussed type of bracelets in this group. However, in three cases, a bracelet was recorded on the right hand (Bel'bek IV, grave 6, 163; Ust'-Al'ma, grave 977, layer 3, burial 8), and only in one case on the left hand (Ust'-Al'ma, grave 125, layer 6, burial 20) of a buried person (T.N. Vysotskaa 1975, pp. 17–24; I.I. Gušina, D.V. Žuravlev 2016a, pp. 120, 153–154).

The analysis proves that the method of using the discussed type of bracelets by people representing both sexes did not differ from the standards of wearing such ornaments not only in the Crimea, but also in other territories (cf. V.M. Kosânenko 2008,

p. 136; K. Skóra 2015; B. Polit 2018a; 2018b). Nevertheless, it is worth pointing out that the analysed bracelets recorded on the left hand were made only of bronze, contrary to various types of bracelets representing Sarmatian materials from the Great Hungarian Plain, where, in all cases, bracelets discovered on the left hand were made of iron (V. Kulcsár 1998, p. 113), as well as in contrast to the materials from the Banat region, where a significant part of them were iron (L. Grumeza 2014, p. 78).

Translated by Piotr Moskala

CATALOGUE¹²

1. Bel'bek IV (Бельбек IV), Bakhchysarai rai.

Grave 6 (pit grave; 1 person).

- a. Bronze; subtype 3; $\varnothing = 3\text{--}4$ mm; $\leftrightarrow = 62 \times 54$ mm.
- b. Male; right hand wrist bones.
- c. Br. fibula A5/1 (K13/27) type; br. fibula A/15/VI (K4/IV/2) type; fragment of a Fe sword; 2 Fe knives; Au foil fragments; br. circle of unspecified function; Ž1/3/1 type *terra sigillata*: bowl (PSA) with a *planta pedis* stamp, Ž1/1 type amphora (PSB); 5 beads; animal bone.
- d. 2nd half of the 1st century AD.
- e. –.
- f. I.I. Gušina, D.V. Žuravlev 2016a, pp. 29, 43, 74, 77, 81, 120; 2016b, figs. 6:4–16.

Grave 42 (pit grave; 1 person).

- a. Bronze; subtype 1b; $\varnothing = ?$; $\leftrightarrow = 38 \times 34$ mm (fig. 2:7).
- b. Child; niche bottom.
- c. *Terra sigillata*: Ž1/2 type bowl (PSA) with a *planta pedis* stamp; unspecified number of beads.
- d. 2nd half of the 1st century AD.
- e. Artefact damaged.
- f. I.I. Gušina, D.V. Žuravlev 2016a, pp. 29, 128; 2016b, figs. 25:16–19.

Grave 75 (undercut grave; 1 person).

- a. Bronze; subtype 1a; $\varnothing = 4$ mm; $\leftrightarrow = 59 \times 62$ mm (fig. 2:8).
- b. Female; left hand wrist bones.
- c. Br. A15/I/3 (K4/I/3) type fibula; fragments of a br. fibula of unspecified type; br. ring; br. Chersonesus type coin/pendant (96 AD); pendant made of a boar tusk; Fe belt buckle; Fe knife; br. H9 type mirror; br. handle of a mirror; br. little bell; elements of a Fe jewel casket; 2 clay spindle whorls; fragments of a glass vessel; *terra sigillata*: H70 type globular bowl (ESB) with a rosette-shaped stamp, Ž6/2 type bowl (PSA) with a rosette-shaped stamp; Ž4 type cup (PSB), Ž7 type pitcher (PSB); unspecified type of beads; lump of rouge.
- d. 1st quarter of the 2nd century AD.

- e. Hoop of the artefact completely wrapped with a thin wire.
- f. I.I. Gušina, D.V. Žuravlev 2016a, pp. 24, 33, 48, 58, 81, 94, 134; 2016b, figs. 45:27; 46:4.

Grave 123 (undercut grave; 1 person).

- a. Bronze; subtype 3; $\varnothing = 2\text{--}3$ mm; $\leftrightarrow = 58 \times 64$ mm (fig. 7:17).
- b. ?; right hand wrist bones.
- c. Br. A13/1 (K8/I/1) type fibula; br. A13/2 (K8/I/2) fibula; 3 Fe belt buckles; Fe knife; 2 knotenring type circles; br. bell; *terra sigillata*: bowl (ESB2), Ž18 type bowl (PSA), Ž32/1 type cup (PSB), Ž2/1 type pitcher (PSB); 2 gagate beads.
- d. End of the 1st century AD – beginning of the 2nd century AD.
- e. –.
- f. I.I. Gušina, D.V. Žuravlev 2016a, pp. 22, 37, 40, 46, 80, 166; 2016b, figs. 141:1–17.

Grave 135 (undercut grave; 1 person).

- a. Bronze; subtype 3; $\varnothing = 2\text{--}3$ mm; $\leftrightarrow = 49 \times 55$ mm (fig. 4:1).
- b. Female(?); right hand wrist bones.
- c. 2 bronze knotenring type circles; spindle whorl; *terra sigillata*: Ž2/2 type bowl (PSA) with a rosette-shaped stamp, Ž1 type cup (PSB), Ž1/3 type amphora (PSB); 7 beads.
- d. End of the 1st century AD – beginning of the 2nd century AD.
- e. –.
- f. I.I. Gušina, D.V. Žuravlev 2016a, pp. 30, 44, 57, 147; 2016b, figs. 83:1–14.

Grave 163 (undercut grave; 1 person).

- a. Bronze; subtype 1b; $\varnothing = 4$ mm; $\leftrightarrow = 61 \times 71$ mm (fig. 2:9).
- b. Male; right hand wrist bones.
- c. Fe kindjal; Fe knife; 2 br. clips (of kindjal); *terra sigillata*: type Ž2/2 type pitcher (PSB); bead; animal bone. Fill of the niche: amphora fragment.
- d. 2nd half of the 2nd century AD.
- e. –.
- f. I.I. Gušina, D.V. Žuravlev 2016a, pp. 53, 74, 153–154; 2016b, fig. 102:9.

Grave 175 (undercut grave; 1 person).

- a. Bronze; subtype 3; $\varnothing = 3\text{--}5$ mm; $\leftrightarrow = 76 \times 73$ mm (fig. 4:2).
- b. Female; right hand wrist bones.
- c. Br. A14 (K7) type fibula; br. earring; br. ring; Fe knife; br. knotenring type circle; *terra sigillata*: globular bowl (ESB2), cup (*Dacian sigillata*), Ž1 type cup (PSB), Ž2/1 type pitcher (PSB); 42 beads.
- d. Last quarter of the 1st century AD.
- e. –.
- f. I.I. Gušina, D.V. Žuravlev 2016a, pp. 28, 46, 83, 156; 2016b, figs. 112:1–14.

¹² The following scheme of the catalogue was used: a – description of the bracelet (raw material; \varnothing = dimensions of the wire cross-section; \leftrightarrow = dimensions of the bracelet), b – location (sex of the buried person; location regarding the skeleton and the grave), c – co-occurring artefacts, e – chronology, f – literature and archival sources. Typologies by A.K. Ambroz 1966, V.V. Kropotov 2010, and E. Rihia 1979) were used in specifying the types of the fibulae. Typologies by E.M. Alekseeva 1975, 1978, 1982 and A.A. Stoânova 2012 were used in describing the beads. Typology by A.M. Hazanov 1963 was used in discussing mirrors. Typology by D.V. Žuravlev 2010 was used in describing *terra sigillata* pottery. Each time, the first letter of the author of a particular typology is used.

2. Belâus (Беляус), Chornomorske rai.

Grave 10 (vaulted grave; 8 persons).

- a. Bronze; subtype 2; $\varnothing = 2-3.5$ mm; $\leftrightarrow = 62 \times 65$ mm (fig. 3:1).
- b. Female (burial 4); near the hand.
- a. Bronze; subtype 3; $\varnothing = 3.5$ mm; $\leftrightarrow = 61 \times 63$ mm (fig. 4:7).
- b. Female (burial 4); near the hand.
- c. Burial 1-5: 2 fibulae: br. A4 (K3) and A14/I/1 (K4/I/1) type; hand-made vessels: bowl, 2 censers; unspecified number of beads. Burial 6: Fe A14/I/1 (K4/I/1) type fibula; 2 Fe nails; br. item of unspecified function. Burial 7: 2 br. fibulae: A14/I/1 (K4/I/1) and K16/12 type; plaque of unspecified function; hand-made lamp; unspecified number of flints; 2 beads. Burial 8: hand-made censer; Fe knife; *terra sigillata*: 2 pitchers; unspecified number of beads; bone of a cow.
- d. 1st half of the 1st century AD.
- e. Lack of information does not allow us to state on which hand the bracelets were worn.
- f. O.D. Daševskaâ 2014, pp. 21-22; figs. 31-32.

3. Neyzats (Нейзат), Simferopol rai.

Grave 76 (undercut grave; 1 person).

- a. Bronze; subtype 2; $\varnothing = 2 \times 3$ mm; $\leftrightarrow = 58 \times 40$ mm.
- b. Female, age: c. 30-35 years old; right hand wrist bones.
- c. Br. A15/I/4 (K4/I/4) type fibula; Fe fibulae of unspecified type; br. A22 type pendant; Fe buckle; br. coin; 2 br. bells; br. item of unspecified function; hand-made cup; unspecified number of beads; 2 astragali. Corridor: br. earring; fragment of a br. ring; unspecified number of beads.
- d. End of the 2nd century AD - 1st half of the 3rd century AD.
- e. Item strongly deformed.
- f. I. Khrapunov, A. Stoyanova 2018, p. 458.

Grave 254 (pit grave; 3 persons).

- a. Bronze; similar to subtype 1a; $\varnothing = 3 \times 4$ mm; $\leftrightarrow = 54 \times 48$ mm.
- b. Female (burial 2), age: c. 18 years old; right hand wrist bones.
- c. Burial 1: -. Burial 2 and 3: Ag lunula (?); br. item of unspecified function; 160 beads.
- d. 2nd half of the 2nd century AD - 3rd century AD.
- e. -.
- f. I.N. Hrapunov 2004a, pp. 9-10, 28-29, figs. 49:8-22.

Grave 507 (pit grave; 1 person).

- a. Bronze; subtype 1a; $\varnothing = 3$ mm; $\leftrightarrow = 60 \times 59$ mm.
- b. Female; right hand wrist bones.
- c. Br. A11/I/2 (K10/II/36) type fibula; fragment of a br. earring; br. ornament of unspecified function; fragments of a Fe knife; fragments of a br. mirror; elements of a jewel casket; br. knotenring type circle; 2 br. bells; fragments of Fe items of unspecified function; 705 beads and unspecified number of their fragments; animal bone.
- d. End of the 2nd century AD - 1st half of the 3rd century AD.
- e. -.
- f. I.N. Hrapunov 2013, pp. 12-13, 33, 61-64, figs. 59, 60:5-6; I. Khrapunov, A. Stoyanova 2018, p. 464.

Grave 537 (undercut grave; 1 person).

- a. Bronze; subtype 1a; $\varnothing = 3.5 \times 2.5$ mm; $\leftrightarrow = 61 \times 60$ mm (fig. 2:5).
- b. ?; in the place of unpreserved right hand wrist bones.
- c. Fragment of a br. A15/II/1 (K4/II/4) type fibula; glass bead.
- d. 3rd century AD.
- e. -.
- f. I.N. Hrapunov 2014, pp. 11-13, 32, 54, figs. 81:16-18; I. Khrapunov, A. Stoyanova 2018, p. 464.

4. Opuški (Опушки), Simferopol rai.

Grave 3 (vaulted grave; not less than 39 persons).

- a. Bronze; subtype 2; $\varnothing = 4$ mm; $\leftrightarrow =$ specimen fragmentarily preserved.

- b. ? (layer 1; burial 2); in the leg area.

- a. Bronze; subtype 2; $\varnothing = 3$ mm; $\leftrightarrow =$ specimen slightly deformed.
- b. ? (layer 3; burial 11); in the hip area.

- a. Bronze; subtype 3; $\varnothing = 1.5-3$ mm; $\leftrightarrow = 56 \times 54$ mm.
- b. ? (layer 2; burial 4); left hand.

- a. Bronze; subtype 3; $\varnothing = 4$ mm; $\leftrightarrow = 70 \times 68$ mm.
- b. ? (layer 2; burial 6); in the leg area.

- a. Bronze; subtype 3; $\varnothing = 4$ mm; $\leftrightarrow =$ specimen fragmentarily preserved.
- b. ?; ?.

- c. Layer 1: burial 1: *terra sigillata*: bowl similar to type Ž14; beads. Burial 2: br. fibula and Fe A15/I (K4/I) type fibula; br. bracelet and fragment of a br. bracelet; br. ring; br. circle; arrowhead; whetstone; beads; astragalus; flints. Layer 2, burial 3: beads. Burial 4: br. A14/I (K7) type fibula; fragment of a Fe fibula of unspecified type; br. bracelet; Fe arrowhead; Fe knife; fragment of a Fe item; beads. Burial 5: Fe necklace; *terra sigillata*: bowl. Burial 6: fragment of an Ag earring. Burial 7 and 8: coin-pendant; bone plaque (pendant?); beads. Burial 9: br. bracelet; br. plaque; whetstone; beads. Burial 10: br. circle; beads. Burial 11: *terra sigillata*: bowl; beads; animal bone. Burial 12 and 13: fragment of a br. bracelet; Fe item; beads. Skull: 2 beads. Layer 3, burial 14: 3 br. fibulae; br. fibula-brooch; 3 br. bracelets; glass insert; faience pendant; 2 knotenring type circles; br. bell; 2 br. circles; 2 Fe knives; br. anthropomorphic item; unspecified br. and Fe items; hand-made gutus; *terra sigillata*: small bowl similar to type Ž30/2; beads. Burial 15-17: faience pendant; beads. Burial 18: br. A14/I (K7) type fibula; 2 br. arrowheads; br. knotenring type circle; beads; shell of a walnut. Burial 19: fragment of a br. earring; br. mirror; br. item of unspecified function; beads. Burial 20 and 21: br. fibula-brooch; 2 br. earrings; little br. bell; br. circle; beads. Burial 22 and 23: 2 br. fibulae; br. fibula-brooch; br. pendant; 2 br. knotenring type circles; Fe item; beads; rouge. Burial 24: br. fibula; br. ring; br. bracelet; bone plaque; 2 br. knotenring type circles; br. circle; little br. bell; beads; kauri shell. Burial 25 and 26: br. fibula; br. earring; Fe belt buckle; br. mirror; little br. bell; Fe knife; Fe key; br. item; beads; kauri shell. Layer 4, burial 27: br. fibula; bone plaque; Fe knife; fragments of br. items; fragments of a hand-made vessel; beads; animal bones. Burial 28 and 29: br. fibula; br. knotenring type circle; Fe knife; beads. Burial 30 and 31: beads; shell. Burial 32: br. pendant; 2 faience A82 type pendants; beads. Burial 33: 2 br. pendants; gagate pendant; br. belt buckle; 3 br. knotenring type circles; little br. bell; beads. Burial 34: 3 br. pendants (2 bucket-shaped and 1 in the form of an amphora); shell pendant; stone ornament; br. circle; beads. Burial 35: Fe knife; br. H9 type mirror; beads. Layer 5: burial 36-38: br. fibula; 4 Fe knives; Fe belt buckle; br. mirror; 3 Fe items (awls/firesteels?); *terra sigillata*: beads, flints. Burial 39: br. fibula; br. earring; br. pendant; pendants made of animal teeth; br. belt element; plaques covered with Au; br. plaque; Fe arrowhead; br. circle; fragments of br. and Fe items; beads. Burial 40-42: br. fibula; fragment of an Ag earring; br. ring; 2 canine tooth pendants; fragment of a glass vessel; hand-made vessel and a fragment of a hand-made vessel; beads. Burial 43: Ag earring; br. mirror; 3 spindle whorls; beads. Burial 44: Ag earring; canine tooth pendant. Burial 45: fragment of a Fe fibula; beads. Burial chamber and plunder shaft: br. bracelet; br. earring and Ag earring; 2 br. fibulae; unspecified number of fragments of a br. bracelet; glass insert; br. circular ornament of unspecified function; br. belt buckle; bone plaque; br. mirror; fragment of a Fe knife; fragments of br. and Fe items; clay spindle whorl; whetstone; fragments of hand-made and *terra sigillata* vessels; beads.

- d. 1st century BC - 1st century AD.

- e. -.

- f. I.N. Hrapunov 2004b, pp. 5-10, 18-41, figs. 44-60.

Grave 12 (undercut grave; 3 persons).

- a. Bronze; subtype 2; $\varnothing = 3-4$ mm; $\leftrightarrow = 33 \times 35$ mm (**fig. 3:6; 10**).
- b. Child; niche bottom.
- c. Faience A34 type pendant; faience A82 type pendant; 23 beads.
- d. 2nd half of the 1st century AD – 3rd century AD.
- e. Preservation state of the skeletons makes it impossible to associate the artefacts with particular entombed children.
- f. A.A. Stroanova 2012, pp. 7, 10–11, figs. 5–6.

Grave 25 (undercut grave; 1 person).

- a. Bronze; subtype 3; $\varnothing = 2$ mm; $\leftrightarrow = 35 \times 37$ mm.
- b. Child; ?.
- c. Fragment of a br. earring; br. bracelet; br. lunula; br. coin; 2 br. bells; faience A33 type pendant; 18 beads; astragalus.
- d. 2nd half of the 1st century AD – 1st half of the 2nd century AD.
- e. The bracelet was originally worn by an adult. After being damaged, the item was secondarily used as a child bracelet.
- f. A.A. Stroanova 2012, pp. 13, 18–20, figs. 14–15.

Grave 33 (undercut grave; 1 person).

- a. Bronze; subtype 2; $\varnothing = 2 \times 3$ mm; $\leftrightarrow = 47 \times 45$ mm (**fig. 3:5**).
- b. Child; ?.
- c. Fragment of a br. ring; 3 br. pendants belonging to type A26; br. A19a type pendant; br. A30 type pendant-amulet; faience A89 type pendant; faience S6 type pendant; br. teardrop-shaped plaque; 3 glass monochromatic pendants: belonging to S2 (1 specimen) and S3 type (2 specimens); br. HVI type mirror; br. bell; *terra sigillata*: small bowl; 291 beads.
- d. 2nd half of the 1st century AD.
- e. –.
- f. A.A. Stroanova 2012, pp. 25–28, 30, 31, fig. 24, 26.

Grave 42 (vaulted grave; not less than 125, but not more than 137 persons).

- a. Bronze; subtype 3; $\varnothing = 4$ mm; $\leftrightarrow = 58 \times 52$ mm (**fig. 4:3**).
- b. Female; corridor leading to the burial chamber; layer 3; burial 6: left hand.
- a. Bronze; subtype 3; $\varnothing = 4$ mm; \leftrightarrow specimen deformed (**fig. 4:4**).
- b. Female; corridor leading to the burial chamber; layer 3; burial 6: right hand.
- a. Bronze; subtype 3; $\varnothing = 2.5$ mm; $\leftrightarrow = 63 \times 63$ mm (hoop of the specimen damaged) (**fig. 4:6**).
- b. Female; corridor leading to the burial chamber: among mingled bones discovered in layer 3.
- a. Bronze; subtype 3; $\varnothing = 3$ mm; $\leftrightarrow = 40 \times 41$ mm (**fig. 4:5; 5**).
- b. Child (?); corridor leading to the burial chamber: layer 5, in the area of the feet of a woman (burial 12).
- c. Burial chamber: group of bones 1, burial 38: fragment of a hand-made vessel. Group of bones 2: fragment of a hand-made vessel; unspecified number of beads. Group of bones 3, layer 9: fragment of a br. earring; fragment of a Fe item; unspecified number of beads. Layer 7, burial 26: br. bracelet. Layer 4, burial 7: fragments of a hand-made vessel; animal bone. Layer 1, burial 1: 2 br. earrings; br. lunula; 2 faience pendants; fragment of a br. mirror; 2 br. circles; 2 fragments of a Fe rod (awl/firesteel?); fragmentarily preserved *terra sigillata*; 8 beads of unspecified type; animal bone. Layer 1, skeleton 2: 2 br. A15/I/2 type fibulae; Fe bracelet; fragment of a br. pendant; 4 br. plaques; Fe knife; 2 br. clips; 4 glass beads of unspecified type. Burial 3: br. circle. Corridor: layer 6, burial 16: br. A15/I/2 type fibula; 2 axe-shaped pendants; 2 Fe knives. Layer 5, burial 15: br. bracelet. Burial 13: 2 br. earrings, including 1 fragmentarily preserved; unspecified number of beads. Burial 16: axe-shaped pendant. Burial 12: br. circle. Layer 4, burial 10: br. fibula; br.

bucket-shaped pendant; br. mirror; fragments of a Fe item; unspecified number of beads; 2 astragali; shell. Burial 8: fragment of a hand-made vessel; *terra sigillata*: bow and cup. Burial 6: br. pendant. Burial 5: br. fibula; br. ring; br. knotenring type circle. Burial 7: *terra sigillata*: bowl, cup; unspecified number of beads.

- d. 1st century BC – beginning of the 2nd century AD.
- e. –.
- f. I.N. Hrapunov, S.A. Mul'd, A.A. Stoanova 2009.

Grave 51 (pit grave; 1 person).

- a. Bronze; subtype 3; $\varnothing = 2$ mm; $\leftrightarrow = 45 \times 44$ mm.
- b. Child; right hand.
- c. Br. bracelet; fragments of a Fe bracelet; 2 faience A79 type pendants; 2 faience pendants belonging to types A43 (1 specimen) and 86 (1 specimen); Fe item of unspecified function; *terra sigillata*: small bowl belonging to Ž30/2 (PS) type; 35 beads.
- d. 2nd half of the 1st century AD – 1st half of the 2nd century AD.
- e. –.
- f. A.A. Stroanova 2012, pp. 42–44, 89, figs. 36–37.

5. Scythian Neapolis (Неаполь Скифский), Simferopol rai.

Grave 36 (vaulted grave, 11 persons).

- a. Bronze; subtype 1a; $\varnothing = 4$ mm; $\leftrightarrow = ?$ (**fig. 2:1**).
- b. ?; among mingled bones in the burial chamber.
- a. Bronze; subtype 1a; $\varnothing = 3$ mm; $\leftrightarrow = ?$.
- b. ?; among mingled bones in the burial chamber.
- a. Bronze; subtype 1a; $\varnothing = 4$ mm; $\leftrightarrow = ?$.
- b. ?; among mingled bones in the burial chamber.
- c. Burial 1: br. A15/I/1 (K4/I/2) type fibula; br. knotenring type circle; unspecified number of beads. Burial 2: –. Burial 3: –. Burial 4: –. Burial 5: –. Burial 6: –. Burial 7: –. Burial chamber: br. earring; 9 br. bracelets; fragments of br. rings; fragment of a br. A15/I/3 (K4/I/3) fibula; 3 br. A13/2 (K8/I/2) type fibulae; br. R5/2 (K13/2) type fibula; br. R7/4 (K16/5) type fibula; br. R7/6 (K16/8) type fibula; fragments of 3 br. fibulae of unspecified type; 2 br. pendants; br. bell; unspecified number of br. plaques; Fe knife; fragments of Fe knives; mirror of unspecified type; fragments of a br. mirror; br. tweezers (1 specimen); fragments of br. items of unspecified function; grinding stone; 5 clay spindle whorls; hand-made vessels: 3 (?) bowls, miniature vessel; *terra sigillata*: small bowl, bowl, pitcher; unspecified number of beads.
- d. 1st century AD – 1st half of the 2nd century AD.
- e. Lack of detailed descriptions of the items and incorrectly made drawings make it impossible to determine the precise morphology of part of the items.
- f. È.A. Symonovič 1983, pp. 41–42, 149, 152, 156, figs. I:1–12; IV:12; IX:9; X:2, 9; XXII:6; XXII:7, 14, 20, 33, 38; XXV:12, 17, 19; XXVI:1, 11–13, 16; XXVII:16, 25–26; XXIX:12, 22; XXX:25; XXXI:12, 38–37, 45, 48; XXXII:15; XXXIII:7, 9, 10, 16; XXXVII:2; XLI:6; XLIII:21; XLIV:10.

Grave 69/NE (undercut grave; 2 persons).

- a. Bronze; subtype 3; $\varnothing = 4$ mm; $\leftrightarrow = 47 \times 48$ mm.
- b. Child; left hand wrist bones.
- c. Burial 1: br. necklace. Burial 2: br. circle.
- d. 1st century AD – 2nd century AD.
- e. –.
- f. A.E. Puzdrovskij 1992, p. 184, figs. 21:18–26.

Grave 71/NE (grave with 2 niches, niche E: 2 persons; niche W: 1 person).

- a. Bronze; $\varnothing = 4$ mm; $\leftrightarrow = 66 \times 60$ mm.
- b. ? (niche E, burial 2); right hand.

- c. Niche E, burial 1: br. A13/2 (K8/I/2) type fibula; br. bracelet; br. ring; 2 faience A67b type pendants; Fe knife; Fe key; br. needle; br. awl; hand-made bowl; *terra sigillata*: bowl, miniature cup; lump of rouge. Burial 2: br. earring; br. bracelet; br. ring; br. needle of a fibula; br. mirror; br. knotenring type circle; Fe key; fragments of a br. bell; 3 Fe items of unspecified function; lump of green glass; hand-made bowl; unspecified number of beads; animal bones. Niche W: br. earring; br. bracelet; br. ring; Fe knife; *terra sigillata*: bowl, pitcher; 4 glass beads; animal bone.
- d. 2nd half of the 1st century AD – beginning of the 2nd century AD.
- e. –.
- f. A.E. Puzdrowskij 1992, pp. 184–188, figs. 4–5.

Grave 74/NE (undercut grave; 1 person).

- a. Bronze; subtype 3; $\varnothing = 4$ mm; $\leftrightarrow = 66 \times 62$ mm.
- b. Female; left forearm bones.
- c. Br. A13/3 (K8/I/3) type fibula; 6 beads.
- d. 1st century AD – beginning of the 2nd century AD.
- e. –.
- f. A.E. Puzdrowskij 1992, pp. 188–190, figs. 6:23–30.

Grave 75 (vaulted grave; 29 persons).

- a. Bronze; subtype 1a; $\varnothing = 3$ mm; $\leftrightarrow = ?$.
- b. ?; among mingled bones in the burial chamber.
- c. Burial 1: 2 br. rings; 2 Cu coins. Burial 2: fragment of a br. item. Burial 3: –. Burial 4: –. Burial 5: –. Burial 6: –. Burial chamber (burials 1–29): br. fibula belonging to type A2/III/ “Neapolis” variant (K2/II/1); 4 br. A15/I/3 (K4/I/3) type fibulae; Fe A15/II (K4/II/3) type fibula; br. A13/2 (K8/I/2) type fibula; br. A13/3 (K8/I/3) type fibula; br. A15/5 (K8/I/5) type fibula; 2 fragmentarily preserved br. fibulae; 4 br. earrings; 7 br. bracelets, including specimens fragmentarily preserved; 6 br. rings; 4 br. pendants; unspecified number of Au plaques; 5 Fe knives and knife fragments; 3 H9 type mirrors; fragments of mirrors of unspecified types; elements of a jewel casket; toilet spoon; tweezers (1 specimen); 3 knotenring type rings; br. circle (belt element?); 3 bells, including 1 fragmentarily preserved; fragments of br. items; stone abrasive plate; 5 clay spindle whorls; glass vessels: balsamarium; hand-made vessels: bowl, pot, censer; *terra sigillata*: globular bowls (unspecified number), small bowls (unspecified number), bowl with a *planta pedis* stamp, 2 bowls with graffiti, flasks (unspecified number), pitcher; unspecified number of beads; leather pouch; animal bones; lump of rouge.
- d. 1st century BC – 2nd century AD.
- e. Quality of the drawings and lack of detailed descriptions of the artefacts make it impossible to specify precisely the dimensions of the bracelet.
- f. È.A. Symonovič 1983, pp. 50–52, figs. I:7, 10; II:4, 7–8; IV:5, 16; V:4, 9; X:4, 8; XI:7, 10, 12; XII:4, 15; XVIII:4; XX:3, 17, 19; XXII:12; XXIII:4–6, 13, 30, 34; XXIV:8, 10, 23, 32–33, 39–40; XXV:9; XXVI:9–10, 14, 19; XXVII:10, 14, 17–18, 26; XXIX:9, 13, 18, 25, 28, 37–38; XXX:18, 20, 50, 56, 60; XXXI:17, 19; XXXIII:6; XXXV:3, 6, 13, 17, 20, 22; XXXVIII:17, 33; XLII:16; XLII:26, 28, 35; XLIVV:8, 29, 34.

Grave 79 (vaulted grave; c. 27 persons).

- a. Bronze; subtype 1a; $\varnothing = 3$ mm; $\leftrightarrow = 65 \times 69$ mm (**fig. 2:3**).
- b. ?; burial chamber.
- a. Bronze; subtype 1a; $\varnothing = 4$ mm; $\leftrightarrow = 71 \times 64$ mm (**fig. 2:4**).
- b. ?; burial chamber.
- a. Bronze; subtype 1a; $\varnothing = 3$ mm; $\leftrightarrow = 60 \times 66$ mm.
- b. ?; burial chamber.
- a. Bronze; subtype 2; $\varnothing = 4$ mm; $\leftrightarrow = 77 \times 71$ mm (**fig. 3:4**).
- b. ?; burial chamber.

- a. Bronze; subtype 2; $\varnothing = 4$ mm; $\leftrightarrow =$ specimen deformed (**fig. 3:3**).
- b. ?; burial chamber.

- a. Bronze; subtype 3; $\varnothing = 4$ mm; $\leftrightarrow = \varnothing = 74$ mm.
- b. ?; burial chamber.

- a. Bronze; subtype 3; $\varnothing = 3$ mm; $\leftrightarrow = 58 \times 63$ mm (hoop of the specimen bears use-wear patterns in the form of a crack, which proves that the bracelet was unbent in order to place it on a hand).
- b. ?; burial chamber.
- c. Br. fibule of the types: A15/I/1 (K4/I); A15/IV/1 (K4/IV/2/1); A15/IV/2 (K4/IV/2/2); A13/2, (K8/I/2); A13/3 (K8/I/3); A12 (K9/1); R5/2 (K13/2); A8/1 (K15); R7/4 (K16/3); R7/6 (K16/8); 3 br. fibulae of unspecified types; fragments of Ag earrings; 8 br. bracelets; 2 br. rings; fragments of an Au diadem; Au plaques for eyes; 2 br. buckles; 3 Fe buckles; anthropomorphic and zoomorphic pendants; unspecified number of plaques; fragments of a Fe sword; fragments of a Fe knife; 8 br. mirrors, including 1 belonging to H9 type; 8 br. knotenring type circles; 7 br. bells; elements of a jewel casket; fragments of an Ag toilet spoon; fragments of a br. needle; br. item of unspecified function (handle?); 7 clay spindle whorls; grinding stone; fragments of hand-made vessels; *terra sigillata*: globular bowl, bowl with a *planta pedis* stamp, bowl, cup, 3 flasks; unspecified number of beads; shell.
- d. End of the 1st century BC – 1st century AD.
- e. Lack of information concerning the locations of the artefacts does not allow us to determine the positions of the items in relation to the skeletons. The quality of the drawings and the lack of detailed descriptions of the artefacts make it impossible to define the precise morphology of the artefacts.
- f. È.A. Symonovič 1983, pp. 52–54, figs. I:19; IV:3, 10–11; VII:3; XI:2, 5–6; XIII:7; XVI:11; XX:23; XXI:1; XXII:11; XXIII:31; XXIV:41; XXV:28; XXVI:2–4; XXVII:29–30; XXX:58, 62; XXXI:49; XXXII:19, 25; XXXIII:2–4, 8, 13–15; XXXVI:1, 15, 19, 20; XXXVII:15; XXXVIII:5, 7, 15, 27; XXXIX:9, 11, 17; XLII:3; XLIII:16–17, 1–20, 22, 29, 31, 34; XLIV:5, 17–19, 24.

Grave 96 (vaulted grave; 21 persons).

- a. Bronze; subtype 1a; $\varnothing = 4 \times 3$ mm; $\leftrightarrow =$ it is impossible to determine the dimensions on the basis of the drawing (**fig. 2:2**).
- b. Female; burial 4: left hand wrist bones.
- a. Bronze; subtype 2; $\varnothing = 3$ mm; $\leftrightarrow = 52 \times 51$ mm (**fig. 3:2**).
- b. Female; burial 4: area of the ribcage.
- a. Bronze; subtype 3; $\varnothing = 3$ mm; $\leftrightarrow = 58 \times 62$ mm.
- b. ?; among mingled bones in the burial chamber.
- c. Burial 3: sandstone globe; unspecified number of beads. Burial 4: br. A15/I (K4/I/2) type fibula; br. bracelet; br. ring; br. belt element; plaque; 2 mirrors; 2 br. knotenring type circles; 2 br. bells; bone globe; unspecified number of beads. Burial 5: unspecified number of flint fragments. Burial 8: br. A15/I (K4/I/2) type fibula; fragments of a Fe knife. Burial 9: animal bones. Burial chamber (burial 1–2, 6–7, 10–21): br. A4 (K3) type fibula; fragments of 2 A15/I (K4/I/2) type fibulae; br. earring; 2 br. bracelets; fragment of a br. ring; br. ornament of unspecified function; pendant; 2 Fe buckles; Fe spearhead; fragments of Fe knives; mirror; fragments of 2 mirrors; br. knotenring type circle; br. bell; fragments of a br. bell; fragments of br. and Fe items of unspecified functions; hand-made vessels: jigger, fragments of unspecified vessels; *terra sigillata*: bowl, cup, flask; unspecified number of beads; animal bones.
- d. 1st century AD – beginning of the 2nd century AD.
- e. –.
- f. È.A. Symonovič 1983, pp. 55–56, 150, 152–153, fig. IX:12; XI:9; XIII:5; XV:96; XXVI:17; XXVII:11–12; XXVIII:26; XXX:32; XXXI:21, 25, 30, 42; XXXIII: 1, 5, 11; XXXIV: 1; XXXVI: 16; XLI:11–12, 14; XLIII:6, 12, 23; XLIV:6, 21; XLV:6, 11, 24.

6. Sovhoz 10 (Совхоз 10), Sevastopol

Grave 66 (undercut grave; 1 person).

- a. Bronze; subtype 3; $\varnothing = 2$ mm; $\leftrightarrow = 50 \times 49$ mm.
- b. Child; right hand.
- c. 3 br. A14 (K7) type fibulae; Ag earring; 2 br. bracelets; Ag ring; glass ring; br. bell; 3 br. needles; Ag plaque; glass vessel: cup; unspecified number of beads.
- d. 2nd–3rd century AD.
- e. –.
- f. S.F. Strželeckij, *et al.* 2005, pp. 198, 213; figs. 9:93–107.

Grave 112 (undercut grave; 1 person).

- a. Bronze; subtype 3; $\varnothing = 3$ mm; $\leftrightarrow = 50 \times 51$ mm (fig. 4:9).
- b. Child; right hand area.
- c. Br. bracelet; *terra sigillata*: cup; unspecified number of beads.
- d. 2nd–3rd century AD (?).
- e. –.
- f. S.F. Strželeckij, *et al.* 2005, pp. 219–220; figs. 15:67–71.

7. Tavel' "Tavel'skie kurgany" (Тавел' "Тавельские курганы"), Simferopol rai. Research by Ū.A. Kulakovskij from the year 1897.

- a. Bronze; subtype 3; $\varnothing = 3$ mm; $\leftrightarrow = 61 \times 64$ mm (fig. 4:8).
- b. ?; ?.
- c. Group of artefacts 1: fibula-brooch; br. earring; br. ring; br. mirror; elements of horse harness; 3 br. arrowheads. Group of artefacts 2: br. A13/2/3 (K8/I) type fibula; br. A12/3 (K9) type fibula; br. earring; c. 5 br. bracelets; 2 br. pendants; br. hooklet for a strap; 4 br. belt buckles; 2 br. knotenring type circles; Fe and br. elements of a jewel casket; *terra sigillata*: vessel; 3 beads.
- d. Group of artefacts 1: 4th–3rd century BC. Group of artefacts 2: end of the 1st century BC – 1st half of the 2nd century AD.
- e. The inventory was researched by scholars on the basis of materials kept in the Central Museum of Taurida in Simferopol and information presented in the documentation of the research carried out by Ū.A. Kulakovskij.
- f. O.D. Daševskaâ 1991, fig. 71:5; A.A. Trufanov 2004; A.E. Puzdrovskij 2007, figs. 44, 43.

8. Ust'-Al'ma (Усть-Альма), Bakhchysarai rai.

Grave 11 (?; ?).

- a. Bronze; subtype 3; $\varnothing = ?$; $\leftrightarrow = ?$.
- b. ?; ?.

- a. Bronze; subtype 3; $\varnothing = ?$; $\leftrightarrow = ?$.
- b. ?; ?.
- c. Br. A15/II/2 (K4/II/4/3) type fibula; br. K16/25 type fibula; fragment of a br. fibula of unspecified type; br. bracelet; br. ring; br. knotenring type circle; br. circle; *terra sigillata*: bowl, cup similar to Ž1 type, pitcher; fragment of the bottom of an unspecified vessel; unspecified number of beads.
- d. 2nd half of the 2nd century AD – 3rd century AD.
- e. The author of the monograph did not present the description of the set, making it impossible to represent the grave in detail. The presented information about the inventory is probably not exhaustive.
- f. T.N. Vysotskaâ 1994, figs. 4:11–34.

Grave 27 (?; ?).

- a. Bronze; subtype 3; $\varnothing = ?$; $\leftrightarrow = ?$.
- b. ?; ?.
- c. Br. A15/I (K4/I/2) type fibula; 3 br. bracelets; fragments of a br. bracelet; br. ring; fragment of a br. ring; br. circle; *terra sigillata*: bowl; unspecified number of beads.
- d. End of the 1st century AD – beginning of the 2nd century AD.
- e. The author of the monograph did not present the description of the set, making it impossible to present the grave in detail.

The presented information about the inventory is probably not exhaustive.

- f. T.N. Vysotskaâ 1994, fig. 6:25–39.

Grave 96 (slab grave; 1 person).

- a. Bronze; subtype 1a; $\varnothing = 4$ mm; $\leftrightarrow = 54 \times 60$ mm.
- b. Child; ?.
- c. Br. A14 (K7) type fibula; br. ring; 2 br. ornaments; faience A90 type pendant; bone pyxis; Fe knife; br. circle; *terra sigillata*: table amphora, 2 globular bowls, bowl; unspecified number of beads; other unspecified items.
- d. 2nd half of the 1st century AD – beginning of the 2nd century AD.
- e. The author of the monograph did not present the description of the set, making it impossible to present the grave in detail. The presented information about the inventory is probably not exhaustive.
- f. T.N. Vysotskaâ 1994, figs. 33:2–16.

Grave 98 (?; ?).

- a. Bronze; subtype 3; $\varnothing = ?$; $\leftrightarrow = ?$.
- b. ?; ?.
- c. Br. fibula of unspecified type; faience A89 type pendant; Fe knife; *terra sigillata*: bowl (ESB2), cup (PSA); pitcher similar to Ž32 type.
- d. End of the 1st century AD – 2nd century AD.
- e. The author of the monograph did not present the description of the set, making it impossible to present the grave in detail. The presented information about the inventory is probably not exhaustive.
- f. T.N. Vysotskaâ 1994, figs. 33:17–23.

Grave 120 (pit grave; 21 bodies arranged in 6 layers).

- a. Bronze; subtype 3; $\varnothing = 4$ mm; $\leftrightarrow = 68 \times 75$ mm.
- b. ? (layer 3, burial 10); left hand wrist bones.
- c. Layer 1, burial 1: br. A11/II/2 (K10/II/2a) type fibula; br. pendant; fragment of a Fe item of unspecified function; faience bead. Burial 2: fragments of a br. needle. Burial 3: fragment of a br. A15/I/3 (K4/I/3) type fibula; Fe sword; Fe knife; br. needle; Fe awl; fragments of br. items of unspecified function. Burial 4: fragment of a br. fibula; 4 br. belt buckles; fragments of a br. plaque; br. clip; hand-made vessels: 2 censers, fragment of a vessel of unspecified type; animal bone; charcoal lumps. Layer 2, burial 5: br. A8/2 (K16/24) type fibula; fragment of a br. fibula of unspecified type; 2 bone pendants; Au lunula; Au and br. plaques; Fe knife with a bone handle; elements of a jewel casket, including fragments of wooden walls; lock elements; Fe key; 2 br. clips; br. knotenring type circle; 3 br. circles of unspecified function; bone circle of unspecified function; br. needle; wooden pyxis; wooden comb; unspecified number of beads; rouge lump. Burial 6: fragments of a br. A15/I/3 (K4/I/3) type fibula; 191 beads. Burial 7: fragment of a br. fibula of unspecified type; 2 Fe belt buckles; iron sword; 2 br. knotenring type circles; Br. item of unspecified type; 17 beads. Layer 3, burial 8: bone comb; fragments of a hand-made vessel; *terra sigillata*: globular bowl; wooden vessel; 2 beads: made of amber (1 specimen) and marl (1 specimen); 83 dogwood seeds; fragments of cloths. Burial 9: 75 Au plaques; br. mirror; 16 agate beads. Burial 10: fragment of a br. fibula of unspecified type; Au plaque; elements of a bow; 10 Fe arrowheads; br. knotenring type circle; Fe nail; clay spindle whorl; 89 beads, including exemplars made of agate (10 specimens), carnelian (4 specimens), faience (75 specimens). Burial 11: –. Burial 12: –. Layer 4, burial 13: br. K13/7 type fibula; Fe knife; fragments of an amphora (?). Burial 14: –. Burial 15: –. Burial 16: br. fibula; faience A84 type pendant; 2 little br. bells; 2 br. knotenring type circles; br. circle of unspecified function; wooden spindle whorl; 102 beads. Layer 5, burial 17: br. K16/8 type fibula; br. belt buckle; Fe knife; br. knotenring type circle; 10 Au plaques; br. circle; fragments of a wooden vessel; hand-made vessels: cup,

- fragment of a censer; 2 beads, including an exemplar made of agate (1 specimen) and faience (1 specimen); lump of charcoal; fragments of leather. Burial 18: br. A8/2 (K16/8) type fibula. Burial 19: br. A8/1 (K15) type fibula; little br. bell; 168 beads, including exemplars made of agate (81 specimens), faience (86 specimens), glass (1 specimen). Burial 20: br. A8/2 (K16/8) type fibula; br. pendant; beads.
- d. 1st century BC – 1st half of the 2nd century AD.
- e. –.
- f. T.N. Vysotskaâ 1975, pp. 4–15, ris. 34:7; 36; 37:3; 42:1; 45:2; 46:2, 3; 1994, pp. 182–185, tabl. 38:13, 26, 27; 39:8, 9, 26, 34, 35; 40:22.

Grave 125 (pit grave; 24 bodies arranged in 7 layers).

- a. Bronze; subtype 3; $\varnothing = 3\text{--}5$ mm; $\leftrightarrow = 60 \times 61$ mm.
- b. Male (layer 6, burial 20); left hand wrist bones.
- c. Layer 1, burial 1: fragment of a br. A15/I/4 (K4/I/4/1) type fibula; 2 br. rings; br. H9 type mirror; fragments of a Fe nail; beads, including exemplars made of gagate, carnelian, gold (2 specimens). Burial 2: br. A15/I/4 (K4/I/4/1) type fibula; br. A15/II/2 (K4/II/4/3) type fibula; fragment of a br. earring; 2 br. bracelets; br. H9 type mirror; br. knotenring type circle; 2 br. circles; Fe knife; *terra sigillata*: bowl; beads, including exemplars made of chalcedony (4 specimens), amber (2 specimens), faience (1 specimen), glass (unspecified number). Burial 1 and 2: br. pendant; br. needle; Fe knife; fragments of a br. item of unspecified function; 2 clay spindle whorls; faience bead. Burial 3: br. A15/II/2 (K4/II/4/3) type fibula; br. pendant; br. bead. Layer 2: br. Chersonesus coin (year 24 AD); Ag coin (69–71 AD) of Vespasian; Ag coin of Faustina the Younger; fragments of a br. H9 type mirror; elements of a Fe jewel casket; fragments of a Fe nail; *terra sigillata*: bowl, cup, pitcher, fragment of an unspecified vessel; unspecified number of beads. Layer 3: br. ring; fragment of a br. ring; 2 hand-made vessels; *terra sigillata*: cup, pitcher. Burial 4: fragment of a Fe fibula of unspecified type; stone pendant/amulet; canine tooth (amulet); 2 fragments of br. earrings; fragments of br. items; unspecified number of beads. Burial A: br. A14 (K7) type fibula; 1 br. ring; bone spoon; unspecified number of beads. Layer 4: clay spindle whorl; unspecified number of beads. Burial 5: br. earring; br. mirror; br. plaque. Burial 6: br. earring; unspecified number of faience beads. Burial 7: br. fibula; br. earring; faience A84 type pendant. Burial 8: br. A4/4 (K3) type fibula; faience A84 type pendant; fragment of a glass vessel; unspecified number of beads. Burial 9: absence of inventory. Burial 10: –. Burial 11: –. Burial 12: –. Burial 13: br. pendant; 3 beads. Layer 5, burial 14: br. R5/2 (K13/2) type fibula; br. bracelet; fragments of a Fe nail; unspecified number of beads. Burial 15: br. A15/I/2 (K4/I/2) type fibula; br. mirror. Burial 16: br. ring; br. bucket-shaped pendant; little br. bell; 3 br. circles; unspecified number of beads. Burial 17: fragments of a br. fibula of unspecified type; 3 agate beads. Layer 6, burial 18: –. Burial 19: br. bracelet; unspecified number of beads. Burial 20: br. A8/2 (K16/8) type fibula; fragments of a br. fibula of unspecified type; 1 faience bead. Burial 21: fragment of a br. ring. Layer 7, burial no. 22: br. fibula of unspecified type; Ag earring; fragments of a Fe nail; unspecified number of beads. Burial 22a: unspecified number of beads. Burial 23: br. fibula-brooch of unspecified type. Burial 24: unspecified number of beads.
- d. 1st century BC – 2nd century AD.
- e. –.

- f. T.N. Vysotskaâ 1975, pp. 17–24; fig. 79–106; 1994, pp. 186–188, figs. 41:5–40; 42; 43:1–8.

Grave 138 (vaulted grave; ?).

- a. Bronze; subtype 1a; $\varnothing = 3.5$ mm; $\leftrightarrow = 63 \times 55$ mm (**fig. 2:6**).
- b. ?/?.
- a. Bronze; subtype 3; $\varnothing = 4$ mm; $\leftrightarrow = 65 \times 69$ mm (**fig. 6**).
- b. ?/?
- c. Br. A15/5 (K8/I/5) type fibula; br. R7/2 (K16/1) type fibula; R7/4 (K16/3) type? fibula-brooch; R7/4 (K16/3) type? fibula-brooch; R7/5 (K16/7) type fibula-brooch; (br. ?) K type? fibula-brooch; fragment of (br.?) fibula-brooch; br. belt buckle; elements of an Ag garland diadem; Ag plaques for eyes; 2 (br.?) earrings; br. bracelet; 2 (br.?) rings; Fe nails; fragments of Fe items; amphora; *terra sigillata*: 2 bowls, pitcher; hand-made vessels; beads.
- d. Grave was discussed on the basis of a table containing the drawings of the artefacts. This is why the presented information is not full and can deviate from the actual state.
- e. Last century BC – 1st century AD.
- f. T.N. Vysotskaâ 1994, figs. 46–47.

Grave 977 (vaulted grave; 9 bodies arranged in 3 layers).

- a. Bronze; subtype 3; $\varnothing = 3\text{--}4$ mm; $\leftrightarrow = 60 \times 62$ mm.
- b. Male (layer 3, burial 8); right hand wrist bones.
- c. Layer 1, burial 1: br. A15/II/1 (4/II/1) type fibula; br. bracelet; 3 beads, including: agate A2g type bead (1 specimen), amber A44 type bead (1 specimen), glass bead of unspecified type. Burial 2: –. Burial 3: br. A14 (K7) type fibula; br. earring; br. bracelet; fragments of a br. H9 type mirror; 2 br. knotenring type circles; 12 beads. Burial 4: Fe knife; *terra sigillata*: type Ž3/1/1 bowl, cup, pitcher; 5 beads; animal bone. Layer 2, burial 5: br. earring; br. bracelet; fragment of a br. ring; 3 fragments of a *terra sigillata*: vessel; 28 carnelian A2 type beads. Burial 6: br. ring; bead of unspecified type. Burial 7: br. K16/27 type fibula; br. bracelet; 9 beads. Layer 3, burial 8: agate A9a type bead. Burial 9: fragment of a br. A14 (K7) type fibula; fragments of 2 br. K15 type fibulae; 3 br. rings; Fe ring; lunula; br. pendant; knotenring type circle; br. circle; rod (awl/firesteel?); 99 beads. Burial 8 and 9: br. H9 type mirror. Fill of the corridor: Ž1/1/1 type bowl with a *planta pedis* stamp. Fill of the burial chamber: fragments of vessels, including B and C type amphorae.
- d. Last quarter of the 1st century AD – 1st quarter of the 2nd century AD.
- e. –.
- f. A.A. Trufanov 2015, pp. 232–249, 619, fig. 1–9; A.E. Puzdrovskij, A.A. Trufanov 2016b, pp. 19–22, fig. 24–27.

9. Zavetnoe (Заветное), Bakhchysarai rai.

Grave 315 (undercut grave; 1 person).

- a. Bronze; subtype 3; $\varnothing = 3$ mm; $\leftrightarrow = 68 \times 73$ mm.
- b. ?; right hand wrist bones.
- c. Br. A2 (K15) type fibula; br. A13/5 (K8/I/5) type fibula; Fe knife; 2 br. earrings; 3 br. rings; Fe buckle; clay spindle whorl; *terra sigillata*: bowl, 2 pitchers, including 1 belonging to Ž20/1 type; 4 beads; lump of rouge.
- d. 1st half of the 2nd century AD.
- e. –.
- f. Ū.P. Zajcev, *et al.* 2007, p. 257, fig. 22.

LIST OF CITED LITERATURE

- Alekseeva E.M.
 1975 *Antičnyje busy Severnogo Pričernomor'â* (= Arheologią SSS. Svod arheologičeskikh istočnikov, vyp. G1–12), Moskva.
 1978 *Antičnyje busy Severnogo Pričernomor'â* (= Arheologią SSS. Svod arheologičeskikh istočnikov, vyp. G1–12), Moskva.
 1982 *Antičnyje busy Severnogo Pričernomor'â* (= Arheologią SSS. Svod arheologičeskikh istočnikov, vyp. G1–12), Moskva.
- Ambroz A.K.
 1966 *Fibuly ūga Evropejskoj časti SSSR II v. do n.è. – IV v. n.è.* (= Arheologią SSS. Svod arheologičeskikh istočnikov, vyp. D1–30), Moskva.
- Andrzejowski J.
 1994 Powiązania kultur przeworskiej i wielbarskiej w świetle znalezisk bransolet, [w:] Gurba J., Kokowski A. (red.), *Kultura Przeworska*, t. 1, Lublin, s. 317–342.
- Arsen'eva T.M.
 1970 Mogił'nik u der. Novo-Otradnoe, [w:] Mel'ukova A.I. (red.), *Poseleniâ i mogił'niki Kerčenskogo poluostrova načala n.è.* (= Materialy i issledovaniâ po arheologii SSSR, 155), Moskva, s. 82–149.
- Dąbrowska T.
 2005 Bransolety z młodszego okresu przedrzymskiego w kulturze przeworskiej i oksywijskiej, [w:] Łuczkiwicz P., Gładysz-Juścińska M., Juściński M., Niezabitowska-Wiśniewska B., Sadowski S. (red.), *Europa Barbarica. Ćwierć wieku archeologii w Masłomęczu* (= Monumenta Studia Gothica, t. 4), Lublin, s. 79–90.
- Daševskaâ O.D.
 1991 *Pozdnie skify v Krymu* (= Arheologią SSS. Svod arheologičeskikh istočnikov, vyp. D1–07), Moskva.
 2014 *Nekropol' Belâusa*, Simferopol'.
- Grumeza L.
 2014 *Sarmatian cemeteries from Banat (late 1st – early 5th centuries AD)*, Cluj-Napoca.
- Gušina I.I., Źuravlev D.V.
 2016a *Nekropol' rimskogo vremeni Bel'bek IV v Yugo-Zapadnom Krymu*, t. 1 (= Trudy Gosudarstvennogo Istoričeskogo muzeja, vyp. 205), Moskva.
 2016b *Nekropol' rimskogo vremeni Bel'bek IV v Yugo-Zapadnom Krymu*, t. 2 (= Trudy Gosudarstvennogo Istoričeskogo muzeja, vyp. 205), Moskva.
- Hazanov A.M.
 1963 *Genezis sarmatskich bronzovyh zerkal*, Sov. Arch., 4, s. 58–71.
- Hrapunov I.N.
 2004a *Otčet o raskopkah mogił'nika Nejzac v 2003 godu*, prywatne archiwum I.N. Hrapunova.
 2004b *Otčet o raskopkah mogił'nika Opuški v 2003 godu*, prywatne archiwum I.N. Hrapunova.
 2013 *Otčet ob arheologičeskikh issledovaniâh mogił'nika Nejzac v 2012 g.*, prywatne archiwum I.N. Hrapunova.
 2014 *Otčet ob arheologičeskikh issledovaniâh mogił'nika Nejzac v 2013 g.*, prywatne archiwum I.N. Hrapunova.
- Hrapunov I.N., Mul'd S.A., Stoânova A.A.
 2009 *Pozdneskifskij sklep iz mogił'nika Opuški*, Simferopol'.
- Kemeczei T.
 2009 *Studien zu den Denkmälern skythisch geprägter Alföld Gruppe*, Budapest.
- Khrapunov I.
 2012 *The Crimea in the Early Iron Age: an ethnic history*, Simferopol-Kristiansad.
- Khrapunov I., Stoyanova A.
 2018 Fibulae in the Cemetery of Nejzac, [w:] Niezabitowska-Wiśniewska B., Łuczkiwicz P., Sadowski S., Stasiak-Cyran M., Erdrich E. (red.), *Studia Barbarica. Profesorowi Andrzejowi Kokowskiemu w 65. rocznicę urodzin*, t. 1, Lublin, s. 456–479.
- Kločko L.S.
 1981 Odražanie social'noj funkcji skifskogo kostŭma v arheologičeskikh materialah, [w:] *Aktual'nye problemy arheologičeskikh issledovaniij v Ukrainskoj SSR*, Kiev, s. 64–65.
- Kolotuhin V.A.
 1996 *Gornyj Krym v èpohu pozdnej bronzy-načela železnogo veka*, Kiev.
- Korpusova V.N.
 1983 *Nekropol' Zoltoe (K ètnokul'turnoj istorii evropejskogo Bospora)*, Kiev.
- Kosânenko V.M.
 2008 *Hekropol' Kobâkova gorodiša (po materialam raskopok 1956–1962 gg.)* (= Donskie drevnosti, t. 9), Azov.
- Kropotov V.V.
 2010 *Fibuly sarmatskoj èpohi*, Kiev.
- Kulcsár V.
 1998 *A kárpát-medencei szarmaták temetkezési szokásai*, Aszód.
- Larenok V.A.
 2013 *Meotskie drevnosti: katalog pogrebal'nyh kompleksov Kobâkova gorodiša iz raskopok 1999–2000 gg.*, część I, Rostov-na-Donu.
- Łęga W.
 1938 *Cmentarzysko lateńsko-rzymskie z Chełmna*, Toruń.
- Novičenkova N.G.
 2015 *Gornyj Krym: II v do n.è. – II v. n.è.: po materialam raskopok svâtiliša u perevala Gurzyfskoe Sedlo*, Simferopol'.
- Petrenko V.G.
 1978 *Ukrašeniâ skifii VII–III vv. do n. è.* (= Arheologią SSS. Svod Arheologičeskikh Istočnikov, vyp. D4–5), Moskva.
- Pietrzak M.
 1997 *Pruszcz Gdański, Fundstelle 10. Ein Gräberfeld der Oksywie – und Wielbark-Kultur in Ostpommern* (= Monumenta Archaeologica Barbarica, t. 4), Kraków.
- Polit B.
 2012 Pochówki zbiorowe w kulturze późnoscytyjskiej, [w:] Czopek S. (red.), *Hic mortui vivunt. Z badań nad archeologią funeralną*, Rzeszów, s. 183–194.
 2018a Some remarks on the metal jewellery from male burials of the Late Roman period cemetery of Neyzats, Krym v sarmatskuî èpohu, t. 3, Simferopol', s. 121–136.
 2018b Several remarks on metal bracelets from child graves of the Late Scythian culture, [w:] Niezabitowska-Wiśniewska B., Łuczkiwicz P., Sadowski S., Stasiak-Cyran M., Erdrich M. (red.), *Studia Barbarica. Profesorowi Andrzejowi Kokowskiemu w 65. rocznicę urodzin*, t. 1, Lublin, s. 442–455.
- Puzdrovskij A.E.
 1992 Novyj učastok Vostočnogo nekropolâ Neapolâ Skifskogo, Ros. Arch., 2, s. 181–199.
 2007 *Krymskaâ Skifiâ II v. do n. è. – III v. n. è. Pogrebal'nye pamâtniki*, Symferopol'.
- Puzdrovskij A.E., Trufanov A.A.
 2016 *Polevyje issledovaniâ Ust'-Al'minskogo nekropolâ v 2008–2014 gg.*, Simferopol'.
- Riha E.
 1979 *Die römischen Fibeln aus Augst und Kaiseraugst. Mit einem Beitrag von Rudolf Fichter und Chrysta Hochhaus* (= Forschungen in Augst 3), Augst.
- Skóra K.
 2014 Bransolety i dzieci. Kilka spostrzeżeń o ozdobach, dzieciństwie i obrządku pogrzebowym w kulturze wielbarskiej,

- [w:] Andrzejowski J. (red.), *In medio Poloniae barbaricae. Agnieszka Urbaniak in memoriam* (= Monumenta Archaeologica Barbarica, Series Gemina, Tomus 3), Warszawa, s. 211–222.
- 2015 *Struktura społeczna ludności kultury wielbarskiej*, Łódź. Stożnowa A.A.
- 2012 *Detskie pogrebeniâ iz mogil'nika Opuški (po rezul'tatam raskopok 2003–2009 gg.)*, Simferopol'.
- Strželeckij S.F., Vysotskaâ T.N., Ryžova L.A., Žestkova G.I.
- 2005 *Naselenie okruĝi Hersonesa v pervoj polovine I tysâčelietâ novoj èry (po materialam nekropolâ «Sovhoz № 10»)*, Stratum Plus 2003–2004, № 4, s. 27–277.
- Symonovič È.A.
- 1983 *Naselenie stolicy pozdneskijskogo gosydarstva (po materialam Vostočnogo mogil'nika Neapolâ skijskogo)*, Kiev.
- Trufanov A.A.
- 2001 *K voprosu o hronologii brasletov s zoomorfnyimi okončaniâmi (po materialam krymskich mogil'nikov pozdneskijskogo vremeni)*, [w:] Gušina I.I., Žuravlev D.V. (red.), *Pozdnie skify Kryma* (= Trudy Gosudarstvennogo Istoričeskogo muzeja, vyp. 118), Moskva, s. 71–77.
- 2004 *Dopolneniâ k opublikovannym materialam grobnic v «Tavel'skich» kurganah 1897 g.*, [w:] Koltuhov S.G., Lancov S.B., Puzdrovskij A.E. (red.), *U Ponta Èvksinskogo*, Simferopol', s. 135–138.
- 2009 *Hronologiâ mogil'nikov Predgornogo Kryma I v. do n.è. – III v.n.è.*, Stratum Plus 4 (2005–2009), s. 117–328.
- 2016 *Sklep 977 iz pozdneskijskogo Ust'-Al'minskogo mogil'nika*, Istorîi i arheologiâ Kryma, vyp. II, s. 232–249, 619.
- Vysotskaâ T.N.
- 1975 *Отчет о работе Альминского отряда в 1975 г.*, Naukowe Archiwum IA NANU, 1975/22a.
- 1994 *Ust'-Al'minskoe gorodiše i nekropol'*, Kiev.
- Zajcev Ū.P., Vološinov A.A., Kûnel't È., Masâkin V.V., Mordvinceva V.I., Firsov K.B., Fless F.
- 2007 *Pozdneskijskij nekropol' Zavetnoe (Alma-Kermen) 1–3 vv. n.è. v Ūĝo-Zapadnom Krymu. Raskopki 2004 g.*, [w:] Zajcev Ū.P., Mordvinceva V.I. (red.), *Drevnââ Tavrika*, Simferopol', s. 249–290.
- Žuravlev D.V.
- 2010 *Krasnolakovaâ keramika Ūĝo-Zapadnogo Kryma I–III vv. n.è.*, Simferopol'.

Beata Polit

Rozważania nad bransoletami z „kulistymi” i „szyszczkowatymi” zakończeniami w okresie sarmackim na Krymie

Streszczenie

Wśród ludności zamieszkującej Krym w okresie sarmackim bransolety cieszyły się dużą popularnością o czym świadczą ich powszechna obecność w materiałach funeralnych (T.N. Vysotskaâ 1994, s. 108; I.I. Gušina, D.V. Žuravlev 2016a, s. 87). Reprezentują one szeroki wachlarz form, wśród których znajdują się egzemplarze z końcami zwieńczonymi mniej lub bardziej wyodrębnionymi zgrubieniami. Tego typu ozdoby znane są w literaturze przedmiotu pod nazwą „bransolety z kulistymi, stożkowatymi lub szyszczkowatymi zakończeniami” (O.D. Daševskaâ 1991, s. 39; V.M. Kosânenko 2008, s. 135; A.A. Trufanov 2009, s. 225; i inni). Dotychczas formy te były grupowane w jeden typ bez wydzielenia w obrębie niego podtypów, które porządkowałyby zabytki różniące się od siebie formą zgrubienia wieńczącego koniec obręczy. W celu sklasyfikowania omawianych ozdób wyselekcjonowano 57 zabytków, pochodzących z 9 stanowisk (**ryc. 1; patrz katalog**). Przy podziale tego niedużego zbioru kierowano się formą zgrubienia oraz rodzajem drutu z jakiego wykonano obręcz. Takie kryterium pozwoliło na pogrupowanie analizowanych ozdób w ramach 3 podtypów oraz wydzielenie w ich obrębie wariantów.

Podtyp 1 reprezentują bransolety z końcami zwieńczonymi mniej lub bardziej wyodrębnionym kulistym zgrubieniem. Do tej kategorii zaliczono okazy wykonane z gładkiego drutu o okrągłym lub znacznie rzadziej owalnym przekroju – wariant A (**ryc. 2:1–6**) oraz z tordowanego drutu o wielobocznym przekroju – wariant B (**ryc. 2:7–9**).

Podtyp 2 tworzą bransolety z końcami zwieńczonymi mniej lub bardziej wyodrębnionym owalnym zgrubieniem (**ryc. 3**). Obręcz zabytków wykonana jest z gładkiego drutu o okrągłym,

lub rzadziej owalnym przekroju. Okazy zakwalifikowane do niniejszego podtypu posiadają otwarty obwód. Sporadycznie spotykane są również egzemplarze ze stykającymi się lub zachodzącymi na siebie końcami.

Podtyp 3 grupuje okazy z końcami zwieńczonymi mniej lub bardziej wyodrębnionym zgrubieniem zbliżonym do stożka (**ryc. 4–6**). Bransolety zakwalifikowane do niniejszej kategorii wykonane są tylko z gładkiego drutu o okrągłym lub rzadziej owalnym przekroju. Najczęściej posiadają one otwarty obwód, chociaż sporadycznie spotykane są egzemplarze z lekko stykającymi się lub zachodzącymi na siebie końcami.

W analizowanej grupie materiałów najstarsze tego typu formy datowane są na koniec I w. przed Chr. – początek I w. po Chr. W tym okresie omawiane zabytki obecne są przede wszystkim w charakterystycznych dla obrzędowości funeralnej kultury późnoscytyjskiej grobach zbiorowych. Najwięcej tego typu form pochodzi z grobów datowanych na I–II w. po Chr. (**ryc. 7**), a ich liczba diametralnie maleje wraz z końcem II – początkiem III w. po Chr.

Wydaje się, że analizowane bransolety powstały w oparciu o archaiczne wzory, jakie dotarły na Krym z obszaru południowej Tracji (V.G. Petrenko 1978, s. 52). Ich zróżnicowanie oraz liczebność pozwala przypuszczać, że podobnie jak w przypadku analogicznych zabytków pochodzących z sąsiednich obszarów (**ryc. 8, 9**) omawiane formy mogły być produkowane lokalnie.

W przypadku źródeł umożliwiających określenie płci zmarłego, najczęściej omawianych bransolet pochodzi z obiektów, w których materiał kostny oraz inwentarz pozwala stwierdzić, że w grobie pochowana jest kobieta lub dziecko. Nato-

miast wśród mężczyzn opracowywane zabytki nie cieszyły się dużą popularnością.

Analizowane formy noszone były na rękach, przy czym w obiektach funeralnych najczęściej rejestrowana jest prawostronna lokalizacja zabytku. Warto również podkreślić, że

w pochówkach dzieci bardzo często spotykane są bransolety z zakończeniami zwieńczonymi zgrubieniem, których gabaryty pozwalają domniemywać, że pierwotnie należały do dorosłych (**ryc. 10**).

